



Apogee ^{Touch} 1200



Shantou Institute of Ultrasonic Instruments Co., Ltd.

HEADQUARTERS:

Shantou Institute of Ultrasonic Instruments Co., Ltd.
Add: No.77, Jinsha Road, Shantou 515041 Guangdong, China
Tel: 86-754-8825 0150 Fax: 86-754-8825 1499
E-mail: siui@siui.com

HONG KONG OFFICE:

Shantou Institute of Ultrasonic Instruments (HK) Co., Ltd.
Add: Room 2101, Tung Chiu Commercial Center
193 Lockhart Road, Wanchai, Hong Kong
Tel: 852-2891 6722 Fax: 852-2891 6723

www.siui.com

© All rights reserved to SIUI 2012

Touch

Apogee 1200

ADVANCED 4D COLOR DOPPLER
SYSTEM WITH COMPACT DESIGN



MARVELOUS IMAGING TECHNOLOGY

Based on latest image processing technologies developed by SIUI's R&D team, Apogee 1200 Touch boosts confidence of medical users in application of abdomen, OB&GYN, small parts, vascular, pediatrics, musculoskeletal and so on.

◎ Multi-beam Forming Technology

This technology can multiply receive and process scanning lines of images from each element, which largely increases the frame rate of images in B mode, Color mode and 4D mode.

◎ Wideband-beam Emission Technology

With weighted focus's help to transmit wide and equal beams, this technology largely eliminates artifacts and guarantees high resolution in both near and far fields of B mode.

◎ Adaptive Speckle Reduction Technology

The technology assists to reduce noise and artifacts, purify tissue shading and edging, improve contrast resolution and identify early tissue/structure lesion.

◎ Spatial Compound Imaging

The technology helps to ease echo artifacts and improve spatial resolution by scanning the target with multi-direction beam-forming.

◎ Phased Inversion Tissue Harmonic Imaging

By overcoming the general harmonic imaging frequency band limitation, this technology enhances harmonic signals to obtain purified tissue harmonic imaging, resulting in crystal clear images to achieve better observation.

◎ Accurate Doppler Flow Imaging

The technology can analyze the position of Doppler signals and make adaptation simultaneously, to enhance Doppler signals. For example, this technology may realize sensitive color flow imaging of minute vascular of fingers.

Compactness And Versatility Make Apogee 1200 Touch an Ultrasound System beyond Your Imagination

Integrated with compact design and latest imaging technology, versatile Apogee 1200 Touch, with 15-inch medical HD LCD, was born to meet various challenges of ultrasound exams.



VERSATILE ULTRASOUND CLINICAL SOLUTION

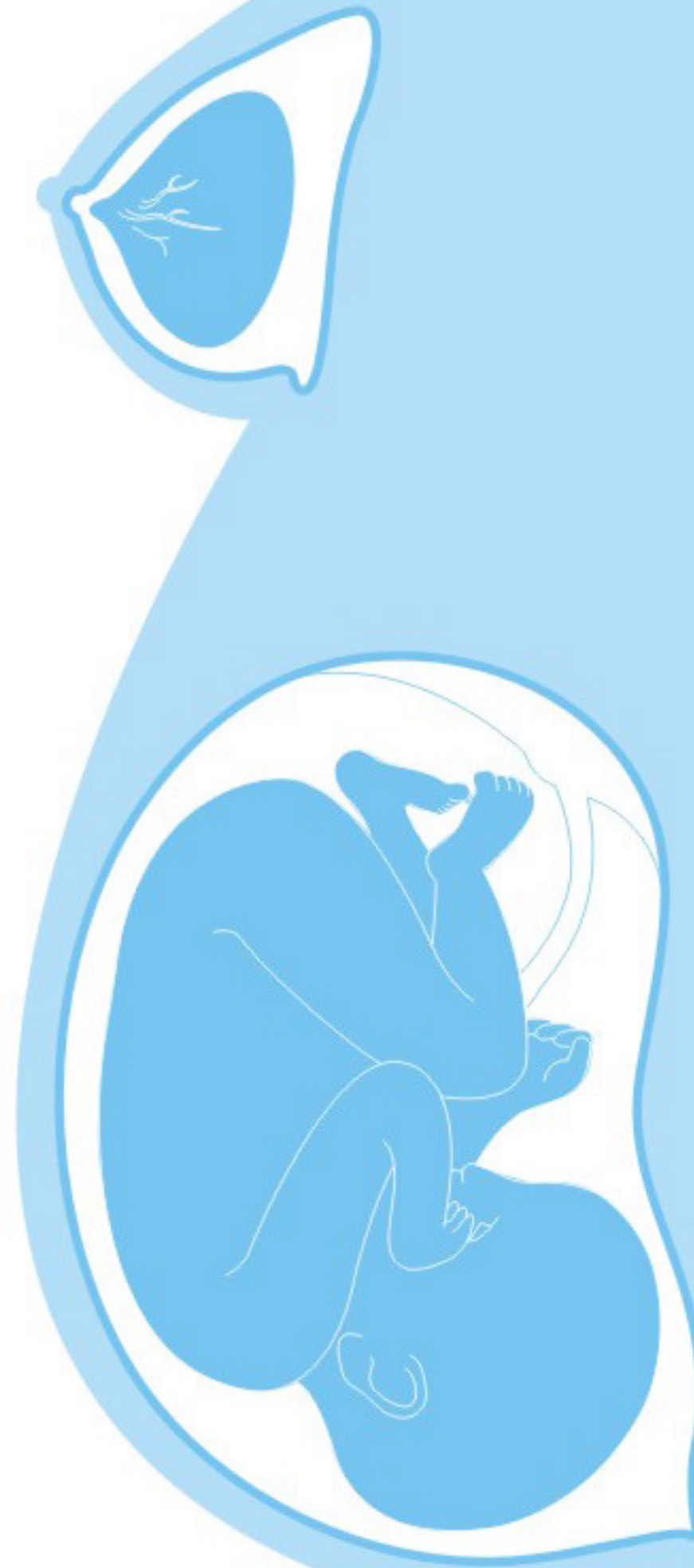
◎Smart Elastography for Breast Exam

The system supports linear probes with elastographic images to visualize stiffness of tissues in real time by delivering an external compression on the tissues. With Smart Elastography developed by SIUI, malignant and benign lesions can be detected easily by different color codes in Elastography mode and the doctors can feel more convinced in early detection of breast cancer.

◎Complete 4D Solution in OB/GYN

The system brings you the amazing 4D experience in OB/GYN exams.

- Multiple Volumetric Probe Option: The system supports penetration priority convex volumetric probe, resolution priority convex volumetric probe and transvaginal volumetric probe.
- Multiple 4D Imaging Mode: Surface mode, Max mode, X ray mode, Negative mode.
- Preset 4D Exam Mode: Fetal, Ossature, Tumor, Cavum, Endometrium and Vessels.
- Smart acquisition of high quality 3D/4D: Auto 3D Scanning and 4D Imaging Enhancement.
- Feasible Sampling Tools: Magic Cut and Curve Cut.



◎LIVE Panoramic Imaging

Extending wider view for scanning large area tissue, the system particularly allows doctors to monitor scanning quality via simultaneous display of B mode/ Panoramic mode. In addition, this outstanding function provides post-processing mode which helps get ideal panoramic images.

◎Smart One Key Optimization

With one button pressed, the system smartly adjusts TGC and B gain in B mode as well as base line, PRF and PW gain to obtain the best B/W images and PW images.

◎Auto IMT (Intima-Media Thickness) Measurement

The system has the function of automatically measuring Intima-Media Thickness of carotid artery wall, so as to evaluate cardiovascular diseases such as hypertension diabetes.

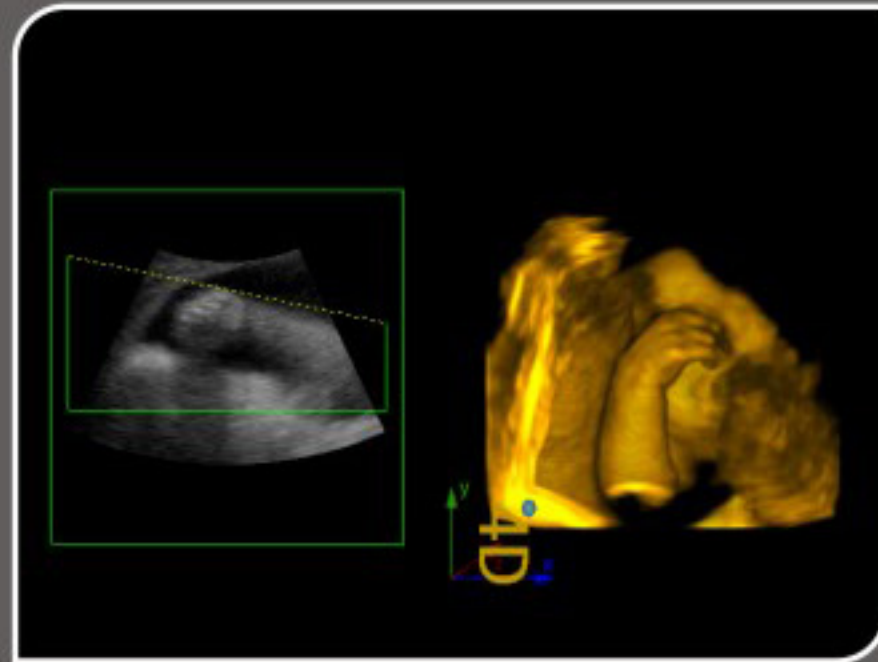
◎Wireless Image Transmission (to iPad/iPhone)

This system offers mobile working in hospitals and clinics. Doctors can access the on-scan images via iPad/iPhone even if he/she is away from the ultrasound system.

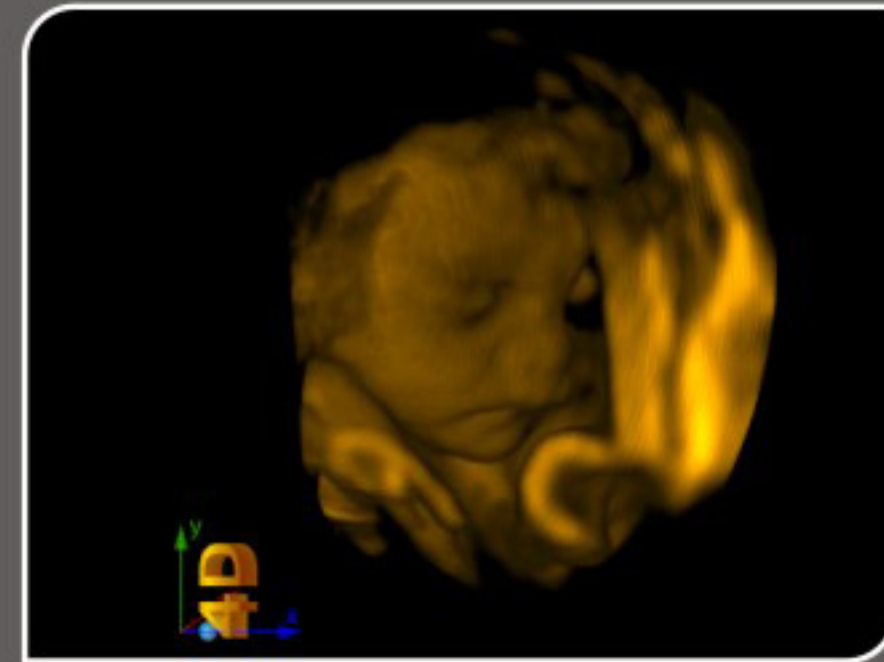
IMAGE GALLERY



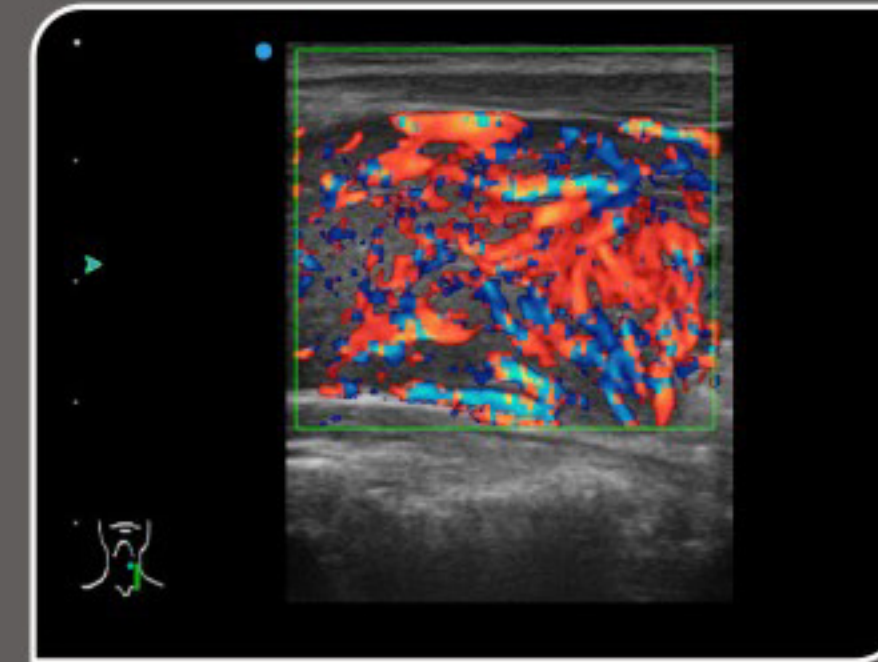
Fetal face



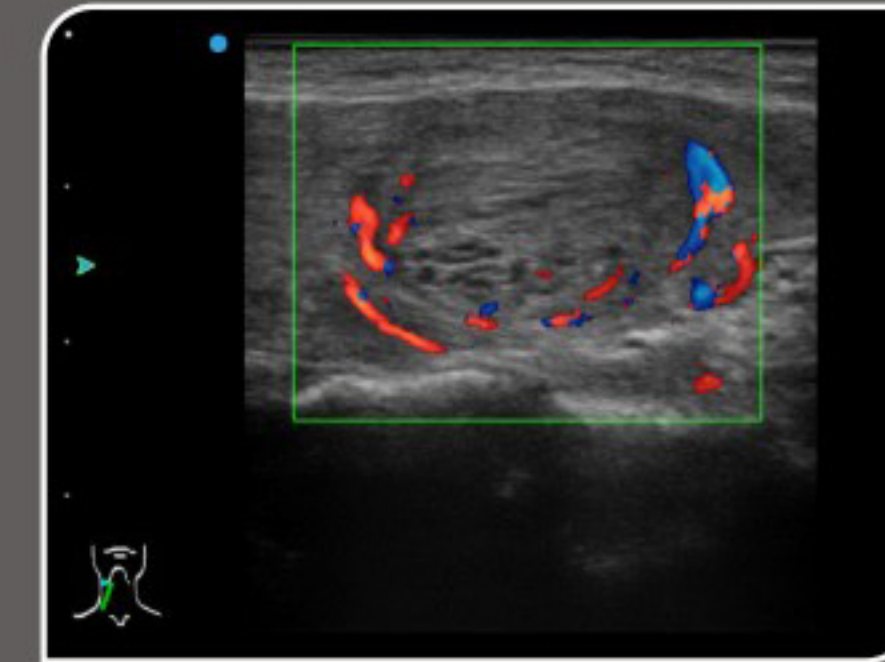
Fetal hand



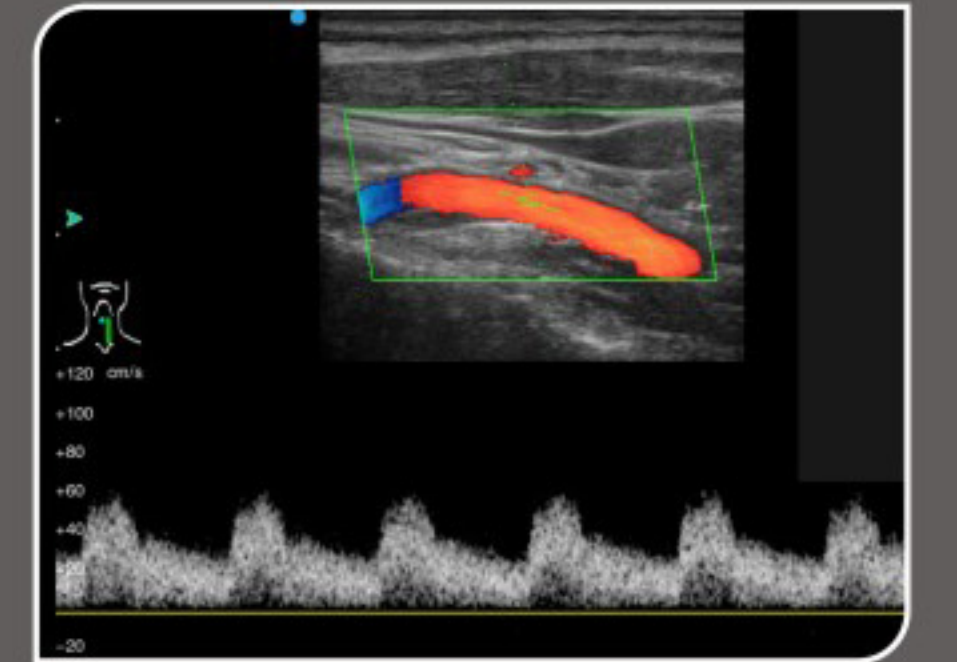
Fetal face



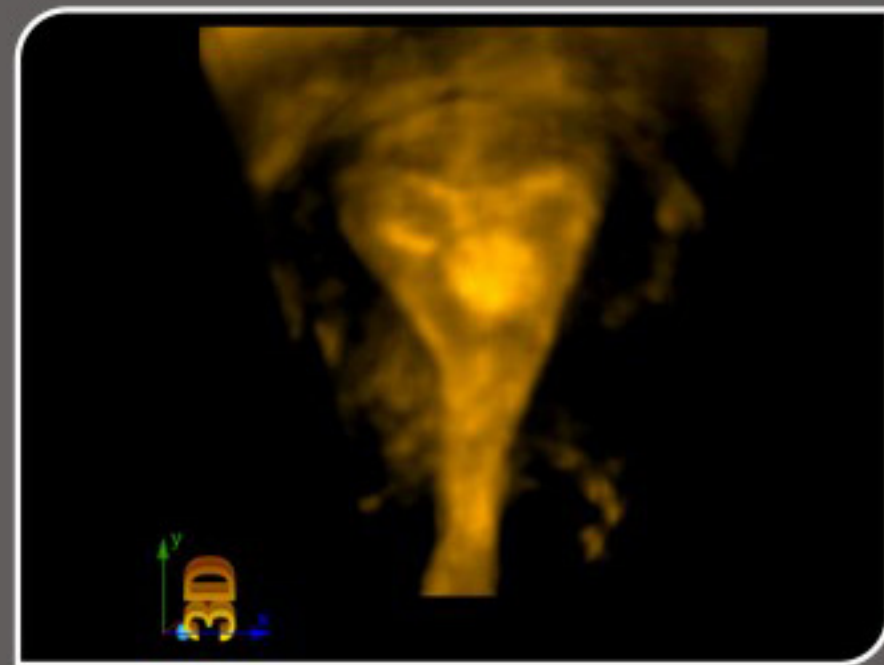
Hyperthyroidism



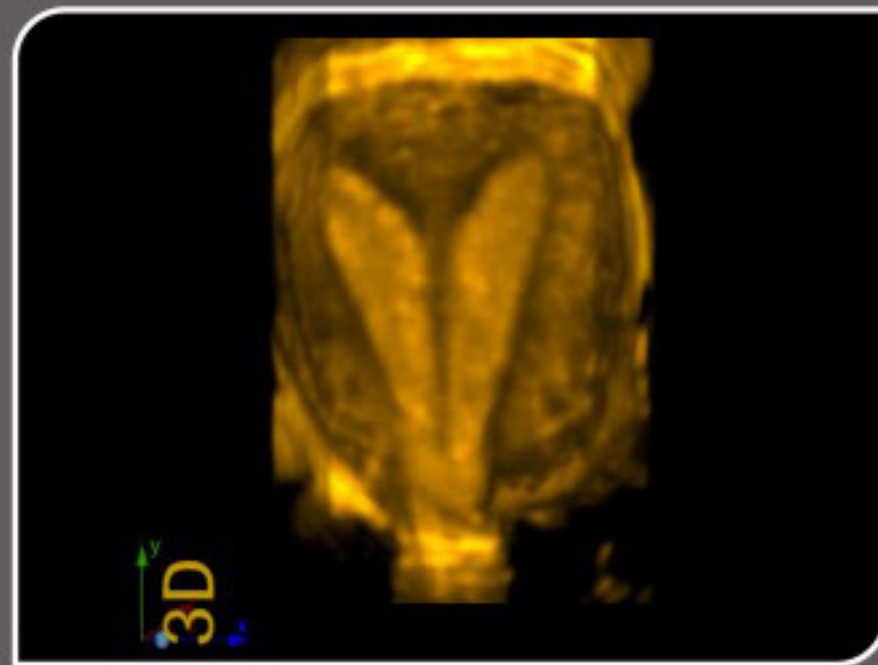
Thyroid lump



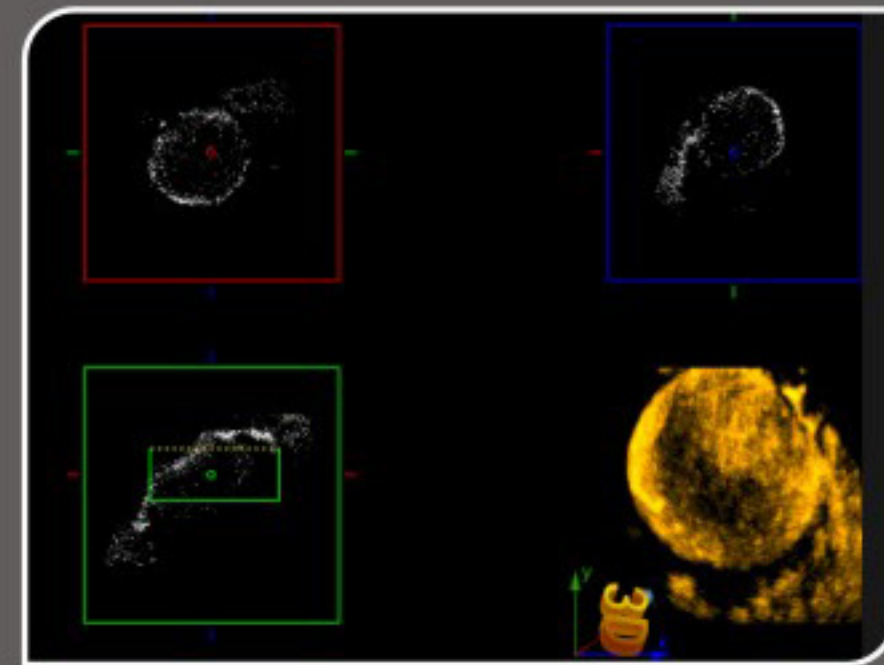
Carotid



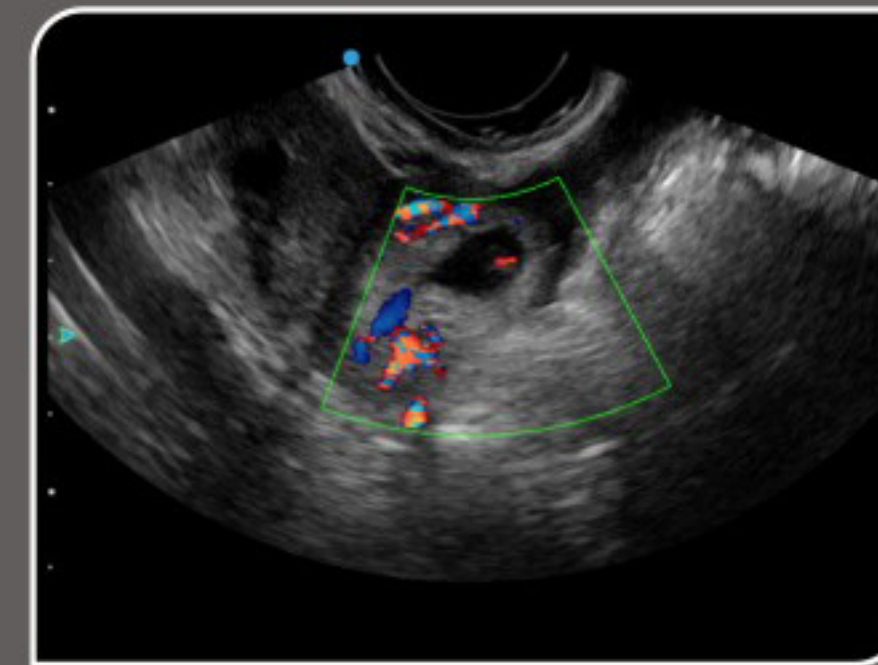
Saddle-shaped uterus



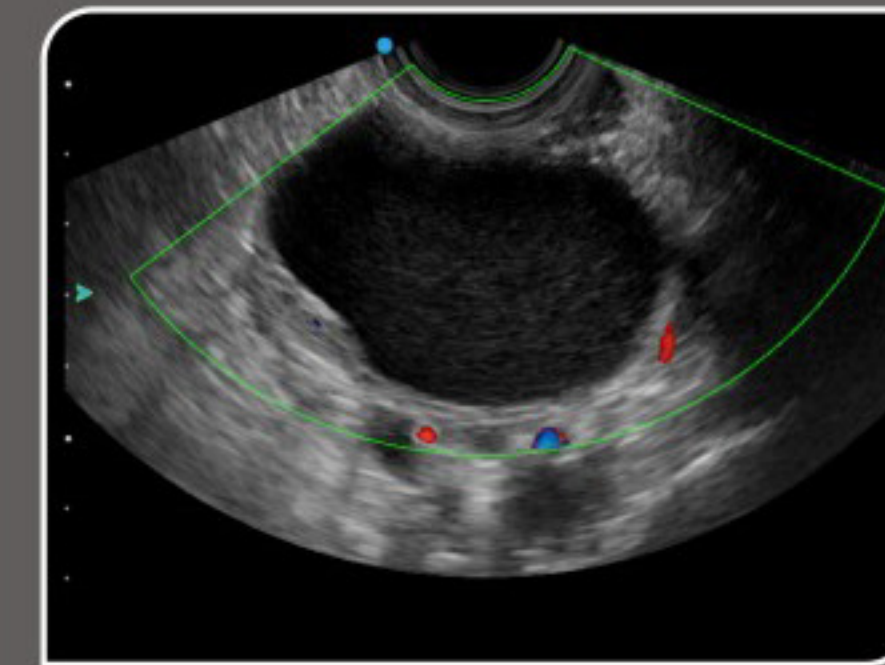
Seperated uterus



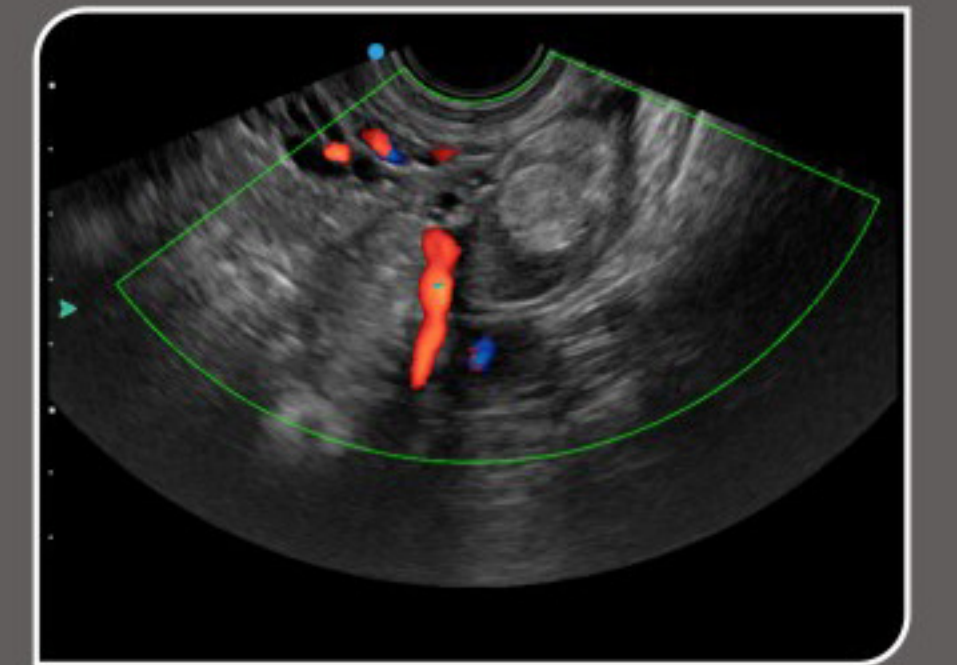
Ovarian cyst



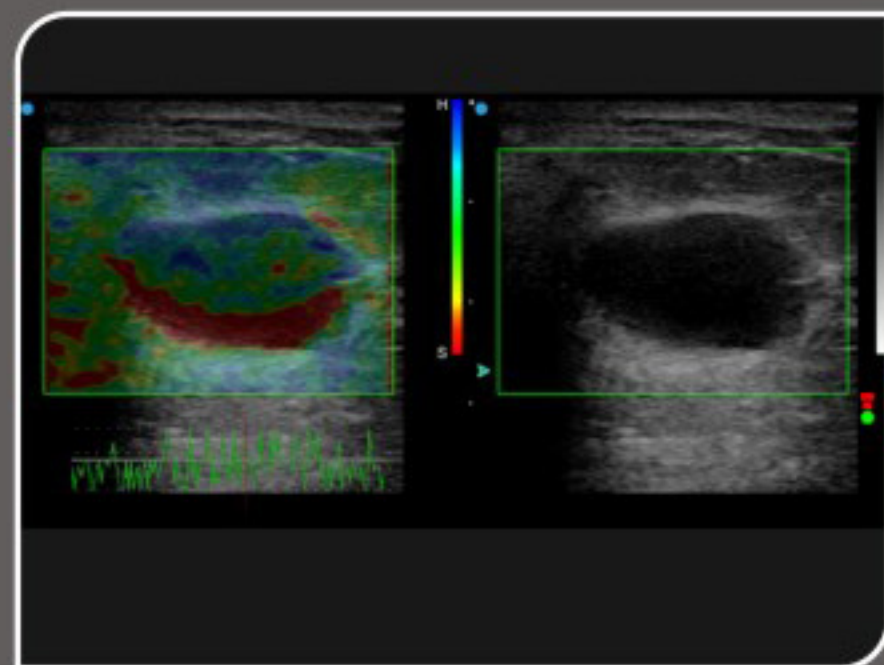
Exfoliation



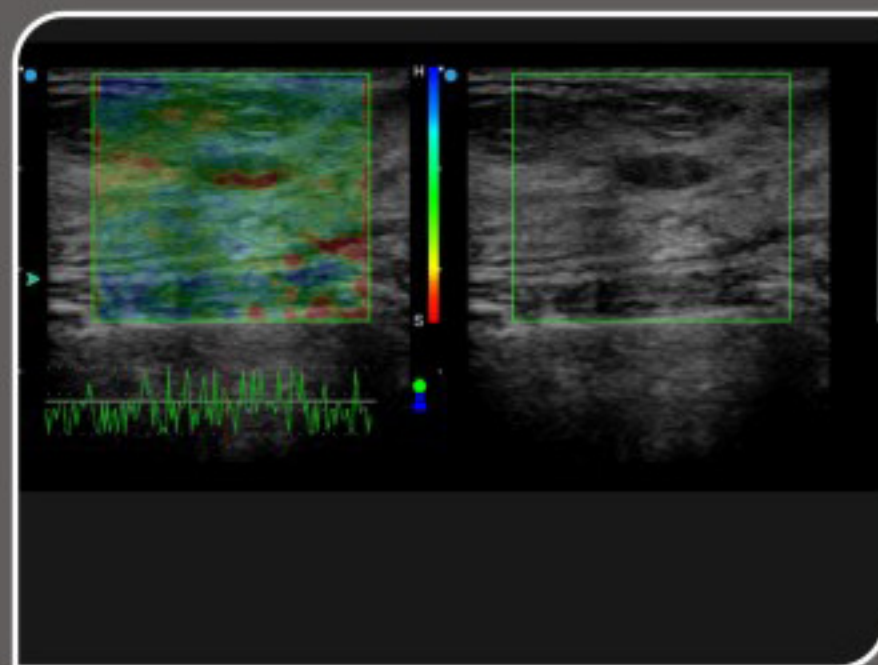
Ovarian cyst



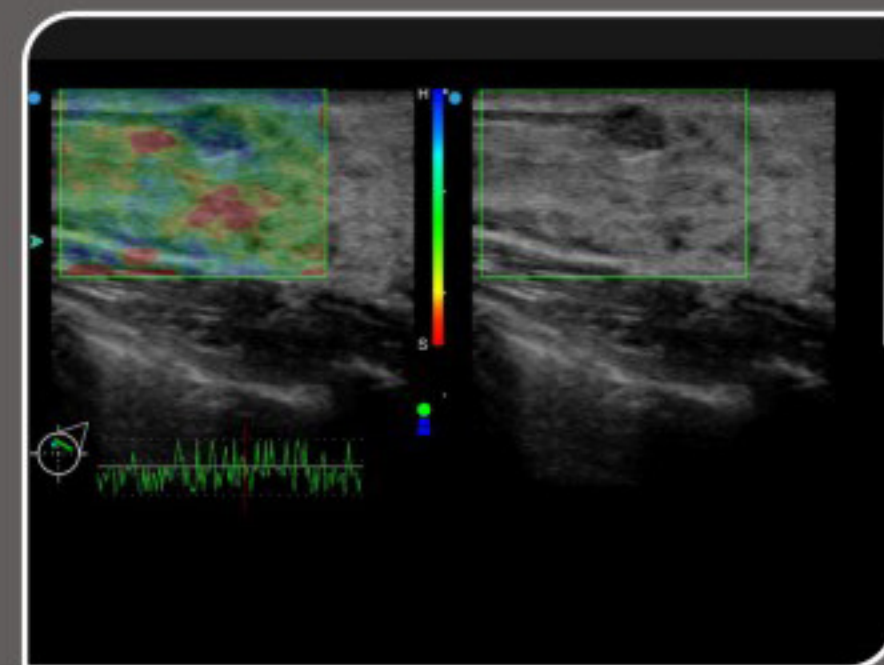
Ovarian teratoma



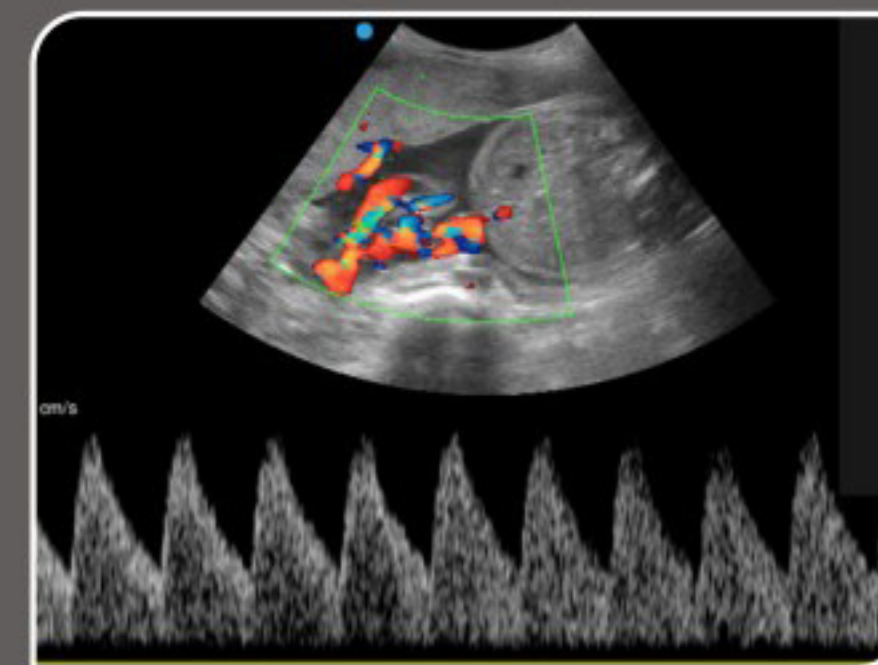
Mammary cyst



Mammary nodules



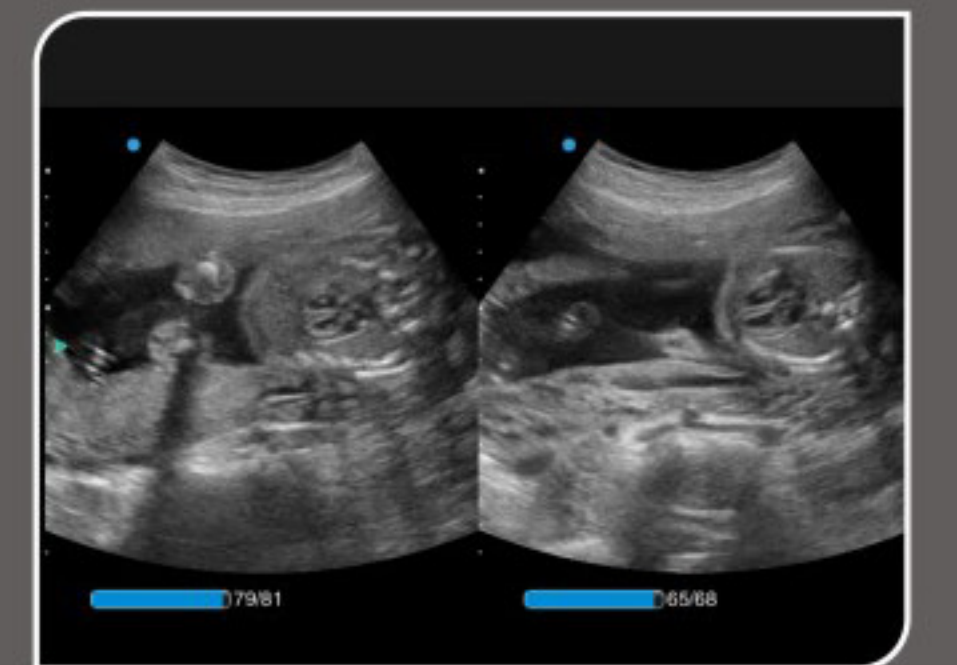
Mammary nodules



Umbilical cord



Fetal nose and lip



Fetal heart