

# *Infa Warmer*j**

Radiant Warmer



# *To Save a Tiny Baby Life*

## From Delivery Room to NICU

Meets wide needs with substantial functions and features.  
Through add-on unit, two kinds of resuscitation unit are available depending on user's demand.



# *Infa Warmer*j**



Ease of Use



Temperature Control



Safety Function



Resuscitation Function





Ease of Use

Surgical operations can be performed safely in the NICU.

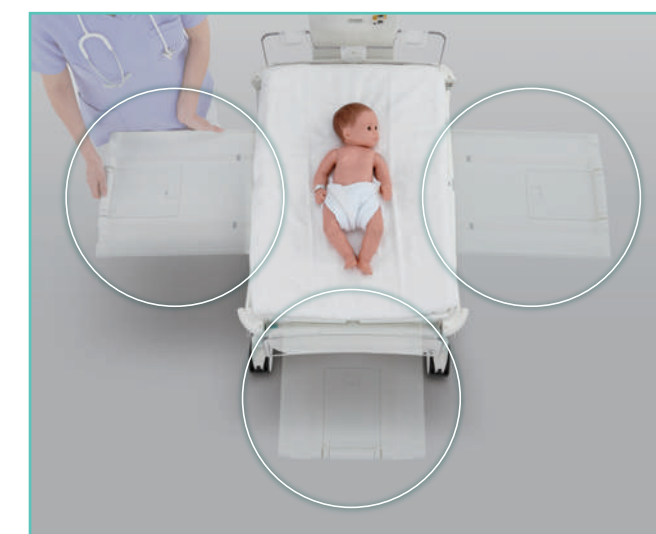


\*Drawer is optional



**T**ouch panel type display with excellent operability and functionality.

- The screen can be switched smoothly by intuitive operation.
- Visibility of weight measurement and alarm indication has improved.
- The pre-heat function can keep the mattress warm before use.



**X**-ray cassette tray accessible from 3 directions.

- X-ray cassette can be taken in and out from 3 directions, which does not interfere with the arrangement of peripheral devices.





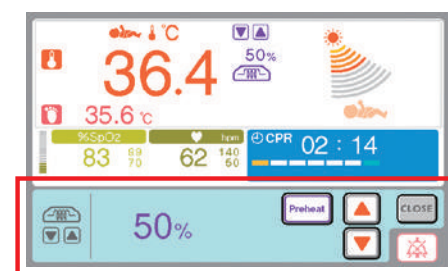
Temperature Control

The infant's skin temperature can be prevented from falling.



**C**onvenient preheating function to warm the mattress sufficiently in an emergency.

- Postnatal care can be given on pre-heated warm mattress.



**F**ar infrared heater warms the mattress surface uniformly.

- The heater reflector improves the warming performance which leads to stable body temperature control.



**T**he canopy can be tilted independently.

- The examination light always illuminates the treatment space according to the inclination of canopy. temperature control.

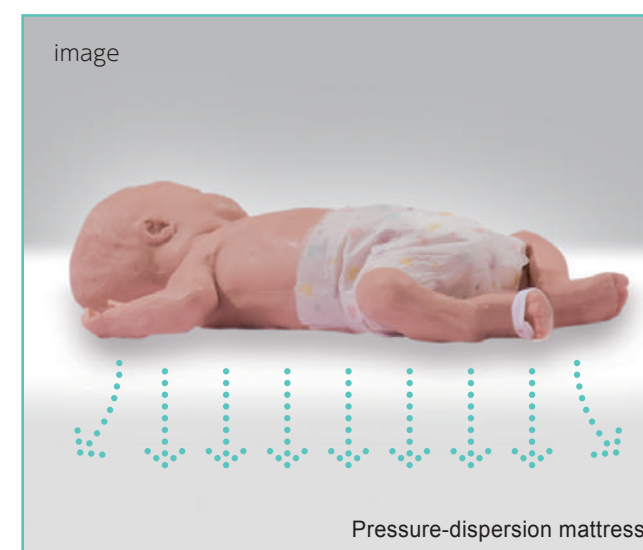
Safety Function

Long-term management with less stress to the infant.



**D**etachable baby guard enables easy complete cleaning.

- The baby guard taking measures against blood invasion can be easily detached without tools and it reduces troubles of cleaning and maintenance.



**P**ressure-dispersion mattress to provide stable and comfortable resting and sleeping surface.

- The pressure-dispersion mattress reduces the infant's stress by minimizing bedsores.



**B**aby Guard

- Thanks to rotary damper, the baby guard can be opened very silently without touching.



Resuscitation  
Function

## Support smooth neonatal resuscitation



## Supports safe artificial ventilation. (Blender Unit 105) <Add-on unit>

- Built-in oxygen blender and manometer supports manual ventilation, such as during replacement of breathing circuit.



## Simple operation supports resuscitation. (Resuscitation Unit 104) <Add-on unit>

- By placing a face mask on the newborn, the user has the ability to control the inspiratory time by placing a finger on T Flow Valve.



Simple operation with a thumb

## The pulse oximeter is available as user's demand. <Add-on unit>

- The pulse oximeter makes administration of oxygen easy and safe.

## CPR Timer

- Inform the timing to assess the health condition of newborn every 30 seconds.



## Useful weight measurement with display operation. <Add-on unit>

- The infant's weight can be simply measured by laying the infant on mattress following to the guide on the display, which reduces infant's stress caused by handling.





Options



atom's code 61580  
**Power Pack i** AC120V  
atom's code 61581  
**Power Pack i** AC230V



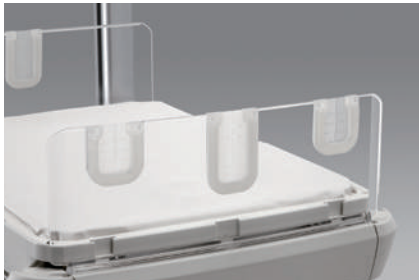
atom's code 60988  
**Drawer w/mounting bracket**



atom's code 61627  
**Open Rack**



atom's code 23629  
**Gastroschisis support arm w/Bracket**



atom's code 23623  
**Baby Guard w/Inlet Packing**



atom's code 23628  
**Handle**  
(Mattress Platform Mounting Type)



atom's code 61617  
**Tray Set** for F-Rail  
atom's code 61618  
**Tray Set (S)** for F-Rail



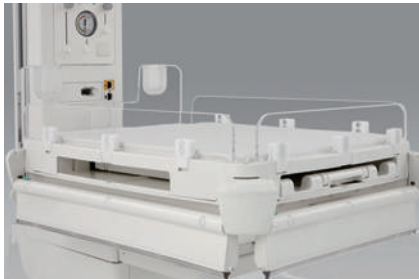
atom's code 60216  
**Infa Lite** AC100-240V



atom's code 61642  
**Drainage Hanger** (2 pcs/pkg)



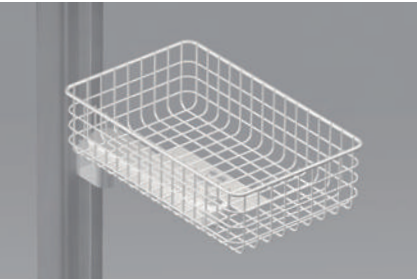
atom's code 60895  
**Cylinder Rack** for F-Rail (1 pce)



atom's code 23624  
**Inner Panel** 3 pcs/set



atom's code 60899  
**Handle** for F-Rail (2 pcs/set)



atom's code 60894  
**Basket w/arm** for F-Rail



atom's code 23719  
**Multi Holder** (Baby guard mounting type)



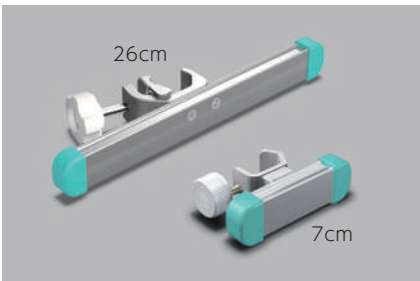
atom's code 61071  
**Cord Holder** for F-Rail (5 pcs/pkg)



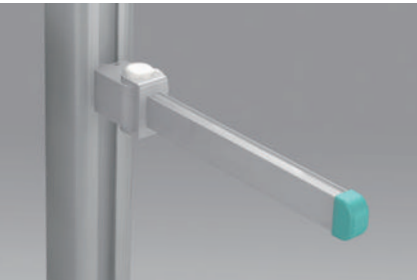
atom's code 60349  
**Monitor Table** for F-Rail



atom's code 60350  
**Monitor Table**  
for Philips monitor for F-Rail



atom's code 60306  
**MF-Rail, 7cm** Pole mounting type  
atom's code 60367  
**MF-Rail, 26cm** Pole mounting type



atom's code 61616  
**MF-Rail** for F-Rail (Left & Right)



atom's code 23627  
**Tube Holder**  
(Mattress Platform Mounting Type)  
atom's code 60871  
**Tube Holder**  
(Baby guard Mounting Type)



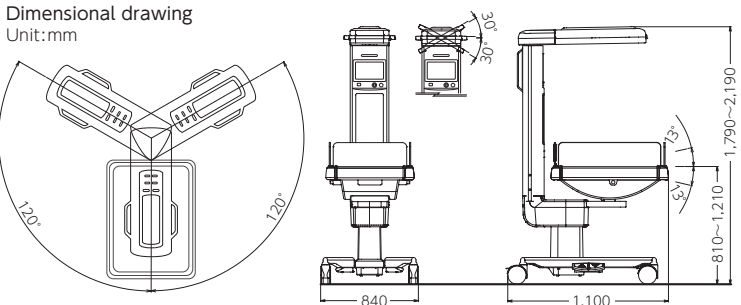
atom's code 60893  
**I.V Pole** for F-Rail

Product Lineup

Infa Warmer <i>i</i>		Atom Infant Warmer 103	
----------------------	--	------------------------	--

Main Unit	
Atom's code	Power requirements
61633	AC120V±10%
61634	AC230V±10%

Add-on Unit	
Atom's code	Description
61663	SpO <sub>2</sub> Unit (Masimo)
61664	SpO <sub>2</sub> Unit (Nellcor)
61650	Resuscitation Unit P type*1
61651	Resuscitation Unit E type*2
61652	Blender Unit P type*3
61653	Blender Unit E type*4
23631	Weight Monitor Unit



〈Note〉

\*1:T-Piece Resuscitation Unit with Blender and Suction Unit  
(connect to central piping system)

\*2:T-Piece Resuscitation Unit with Blender and Suction Unit of ejector type to  
make suction operation possible where no suction piping is available

\*3:O<sub>2</sub> Blender Unit and Suction Unit (connect to central piping system)

\*4:O<sub>2</sub> Blender Unit and Suction Unit of ejector type to make suction operation  
possible where no suction piping is available

## Specifications

Power requirements	Customer specified	Heater output setting range	0~100% (in 5% increments)
Power consumption	700VA	Heater output indication	In 10 levels
Type/Degree of protection	Class I/Type BF applied part	Skin temp. setting range	34.0~38.0°C / 93.2~100.4°F (in 0.1°C/°F increments)
Display	Type : Liquid crystal (TFT-LCD) Dot formation : 800×480dots Number of colors : 256colors	Skin temp. display range	30.0~42.0°C / 86.0~107.6°F (in 0.1°C/°F increments)
Heater capacity	500W	Skin temp. display accuracy	±0.3°C / ±0.5°F
Dimensions	Main body : 840(W)x1100(D)x1790~2190(H) mm Mattress : 500(W)x700(D)x25(H) mm	Timer	0~60 minutes 00 second (in one second increments) Apgar mode / CPR mode selectable
Mattress surface	810~1210 mm	Mattress platform tilting	Longitudinal tilt of ±13°(freely adjustable)
Weight	Approx. 105Kg	Canopy mobility range	Horizontal rotation : 240°(120°both sides) Radiation angle : ±30°
Accessories	Skin temp. probe ..... 1 Mattress sheet ..... 1 Dust cover ..... 1 Cover baby ..... 3 Pressure dispersion mattress ..... 1 Cord holder ..... 2 Power cord ..... 1 Operation Manual ..... 1	Lighting	LED lighting, intensity adjustable, 0~1200Lx
		Preheat	Available
		Alarms	Set temp., Baby check, Power failure, System failure, Skin temp. probe, Canopy tilt

## Specifications (Add-on Unit)

### SpO<sub>2</sub> Unit [Masimo/Nellcor]

SpO <sub>2</sub>	Display range:1~100% Accuracy (in 70-100%)±3digits Alarm function setting range:Upper limit 50~99%, OFF Lower limit 45~95%, OFF
Pulse rate	Display range:25~240bpm Accuracy (in 25-240bpm)±3digits Alarm function setting range:Upper limit 80~240bpm, OFF Lower limit 35~180bpm, OFF
Mode (Masimo) (Nellcor)	Averaging time:4,6,8,10,12,14,16sec. Sensitivity setting:APOD, Normal, Max FastSat:ON, OFF SatSeconds:10,25,50,100, OFF Response:Normal, Fast

### Resuscitation Unit 104

General	Pressure indication:~2~8kPa (~20~80cmH <sub>2</sub> O)		
Suction unit	Suction pressure control range:0~26.7kPa (0~200mmHg)		
Oxygen blender / flow meter unit	Oxygen concentration range:21~100% Flow rate range:0~15L/min		
Resusci Flow unit	Maximum pressure limit (PMAX) setting range:2.0~5.9kPa (20~60cmH <sub>2</sub> O) Default setting:3.9kPa (40cmH <sub>2</sub> O)		
Accessories	Patient Circuit ..... 1 Piping Connecting Hose for Oxygen ... 1 Face Mask for Neonatal ..... 1 Humidifier Bottle OX-230 ..... 1 Suction Jar Holder ..... 1 Suction Hose ..... 1	Test Bag, 50mL ..... 1 Outlet Connecting Hose for Air/Oxygen ... 1 Face Mask for Infant ..... 1 Outlet Connecting Hose for Suction ..... 1 Suction Canister, 500mL ..... 1 Silencer (for E-type)..... 1	Piping Connecting Hose for Air ..... 1 Oxygen Supply Hose ..... 1 Oxygen Humidifier Jar Holder ..... 1 Piping Connecting Hose for Suction ... 1 Dispo Liner, 500mL ..... 1 Operation Manual ..... 1

### Blender Unit 105

General	Pressure indication:~2~8kPa (~20~80cmH <sub>2</sub> O)		
Suction unit	Suction pressure control range:0~26.7kPa (0~200mmHg)		
Oxygen blender / flow meter unit	Oxygen concentration range:21~100% Flow rate range:0~15L/min		
Accessories	Piping Connecting Hose for Air ... 1 Oxygen Supply Hose ..... 1 Humidifier Bottle OX-230 ..... 1 Suction Jar Holder ..... 1 Suction Hose ..... 1	Piping Connecting Hose for Oxygen ... 1 Tube for Pressure Measurement ..... 1 Outlet Connecting Hose for Suction ... 1 Suction Canister, 500mL ..... 1 Silencer (for E-type)..... 1	Outlet Connecting Hose for Air/Oxygen ... 1 Oxygen Humidifier Jar Holder ..... 1 Piping Connecting Hose for Suction ... 1 Dispo Liner, 500mL ..... 1 Operation Manual ..... 1

### Weight Monitor

Weighing range	300~7000g
Scale interval	1g (weight monitor without official verification) 5g (weight monitor with official verification)



Atom Medical products are produced under strict production control in Japan.  
We provide value and trust of the highest quality for the tiny baby lives in the world.

### Manufacturer: ATOM MEDICAL CORPORATION

18-15, Hongo 3-chome, Bunkyo-ku, Tokyo, 113-0033 JAPAN  
<https://www.atomed.co.jp>

### Exporter: ATOM MEDICAL INTERNATIONAL, INC.

SWT Bldg., 15-9 Hongo 3-chome, Bunkyo-ku, Tokyo, 113-0033 JAPAN  
Phone: + 81 3 3815 2941 Fax: + 81 3 3812 9670/4080