

Apogee 2300

Digital Color Doppler Ultrasound Imaging System

*Enhanced diagnostic value
with portability*



Shantou Institute of Ultrasonic Instruments Co., Ltd.

HEADQUARTERS:

Shantou Institute of Ultrasonic Instruments Co., Ltd.
Add: No.77, Jinsha Road, Shantou 515041 Guangdong, China
Tel: 86-754-8825 0150 Fax: 86-754-8825 1499
E-mail: siui@siui.com

HONG KONG OFFICE:

Shantou Institute of Ultrasonic Instruments (HK) Co., Ltd.
Add: Room 2101, Tung Chiu Commercial Center
193 Lockhart Road, Wanchai, Hong Kong
Tel: 852-2891 6722 Fax: 852-2891 6723

www.siui.com



SIUI SIUI SIUI

SIUI's New Apogee 2300

Enhanced diagnostic value with portability

Apogee 2300 is SIUI's latest product with new fashion design, combined with advanced imaging technology such as MFI, VS-Flow, Nanoview, XBeam, etc. Also equipped with full-functional application packages like 4D, CW, TDI, even Elastography and user-oriented workflow, we do believe that new Apogee 2300 will enhanced your daily diagnostic value with portability.

Powerful imaging technology provides image clarity

• Macro Fidelity Imaging (MFI)

With the MFI technology, Apogee 2300 effectively makes up the spatial resolution gap caused by discrete signals and enhances filtering accuracy. By reducing signal distortion and eliminating unwanted noises, it renders premium images with outstanding resolution, high contrast and enhanced penetration.

• VS-Flow

VS-Flow collects the valid vector information from Doppler signals by frequency modulation. It enables high sensitivity of capillary vessels with extraordinary resolution.

• Nanoview

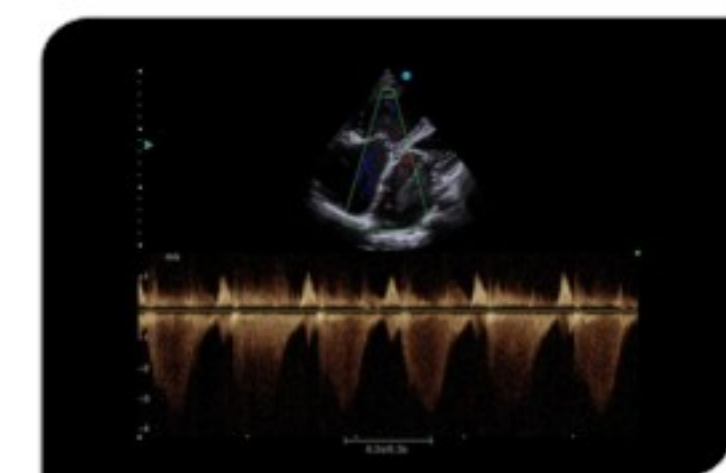
By reducing noises and artifacts, Nanoview is able to present tiny lesions in soften images with distinct tissues and enhanced edge, helping to offer reliable diagnostic results.

Versatile application packages beyond expectation



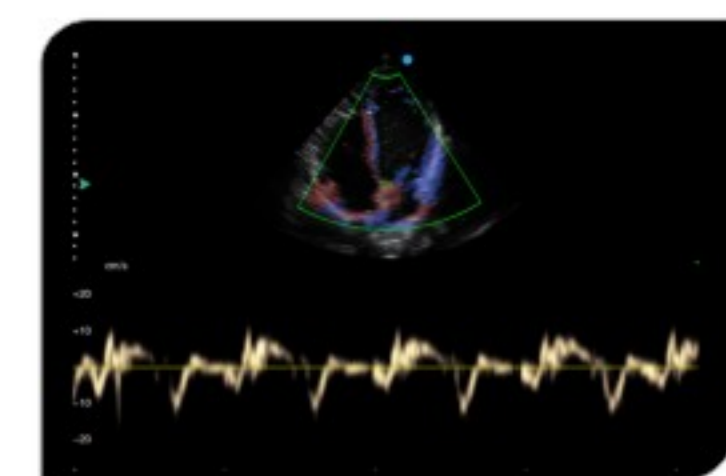
• 4D Pro

With self-owned 4D technology, doctors can easily achieve 4D image with various processing function. Moreover, 4D volume probe enables the system to real-time display volumetric information of fetus or organ conveniently and efficiently.



• CW

Continuous wave Doppler detects the abnormal cardiac high-speed blood flow easily.

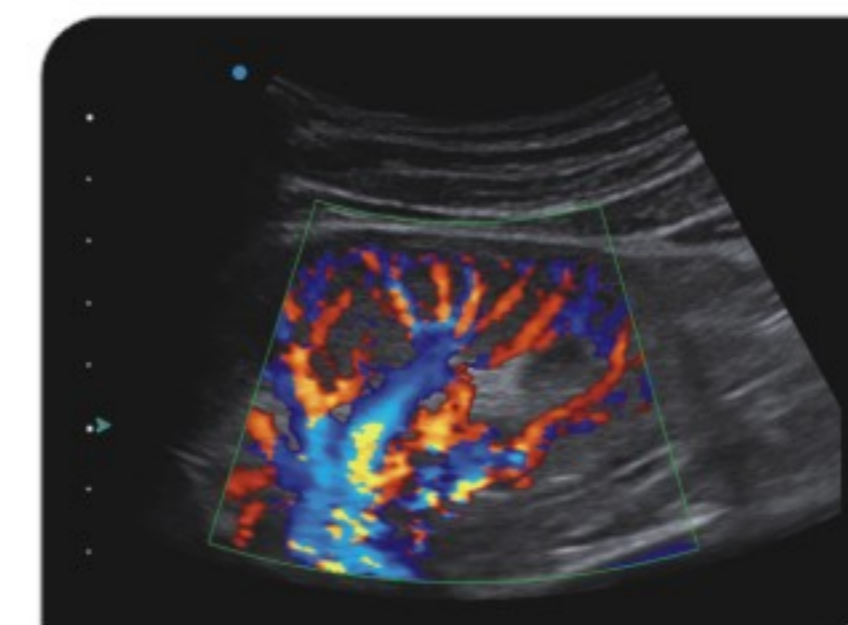


• TDI (Tissue Doppler Imaging)

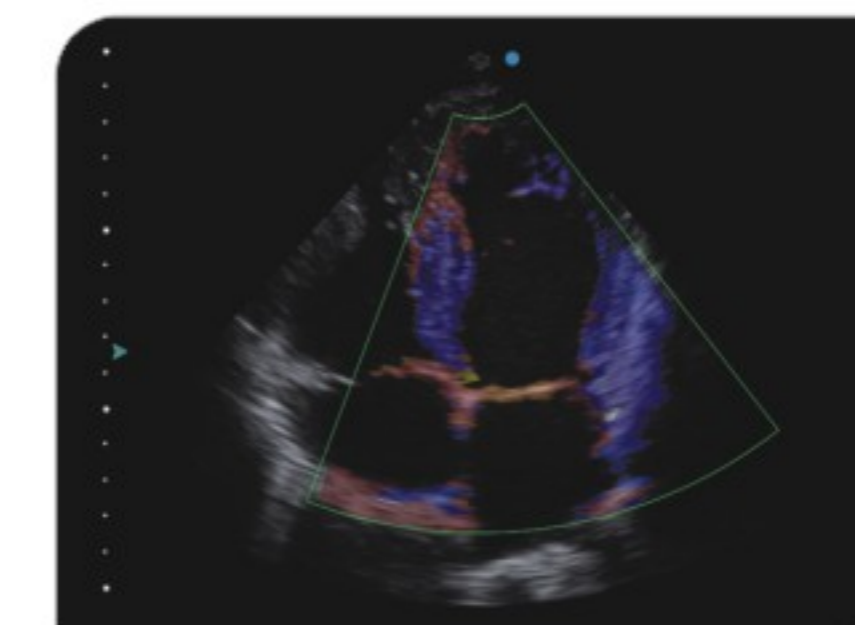
TDI helps to assess the directional and temporal phase of cardiac, so as to display the movement state of vascular wall and the movement speed of heart.



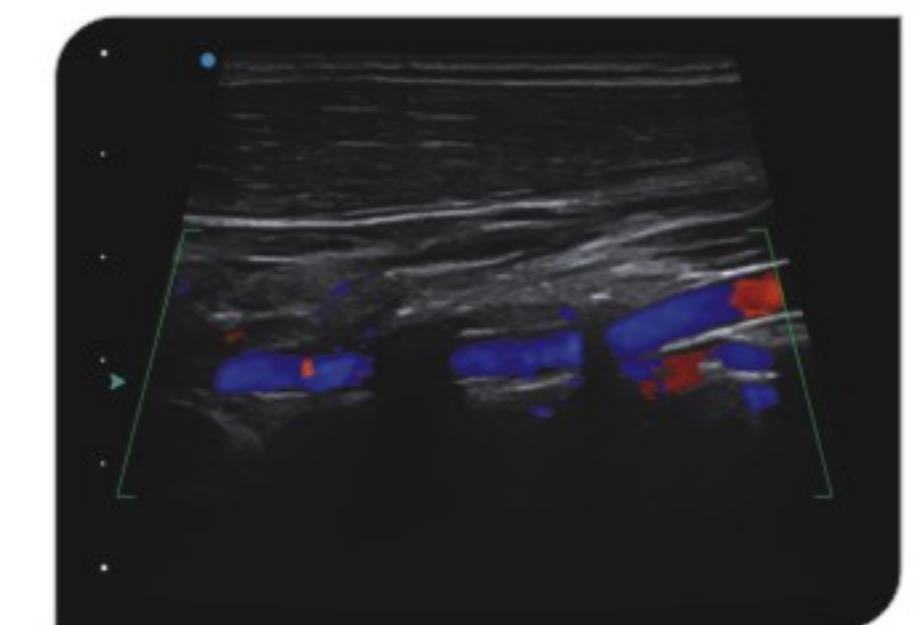
Image Gallery



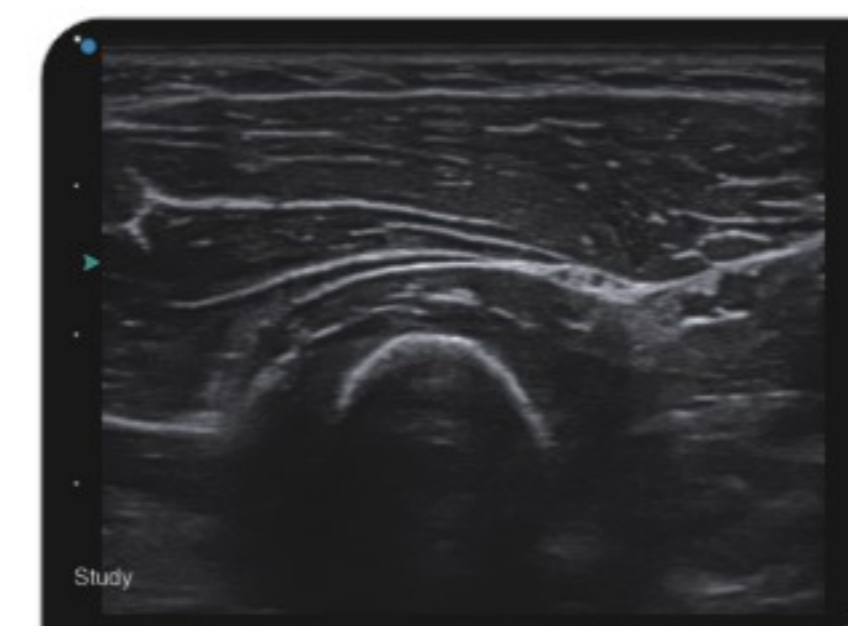
Kidney color mode



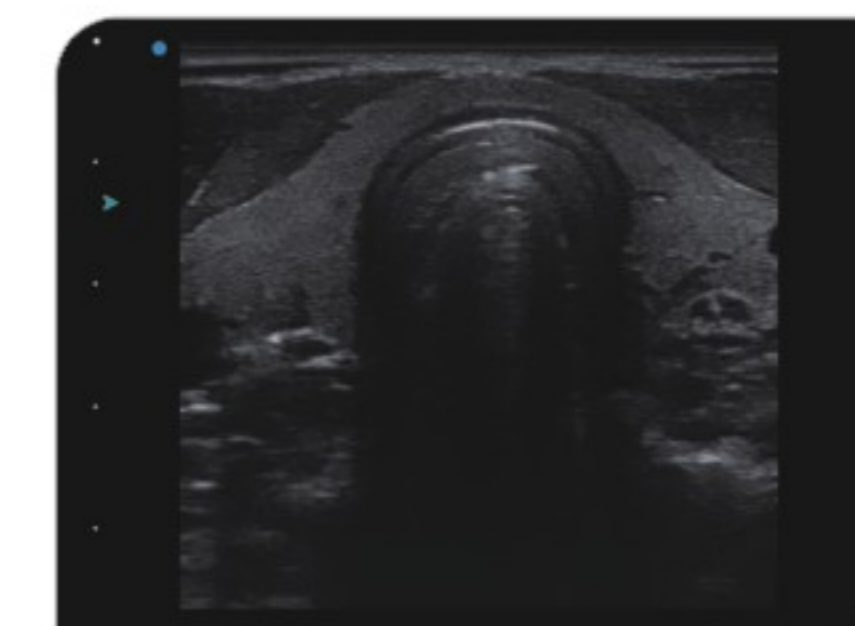
Cardiac TDI mode



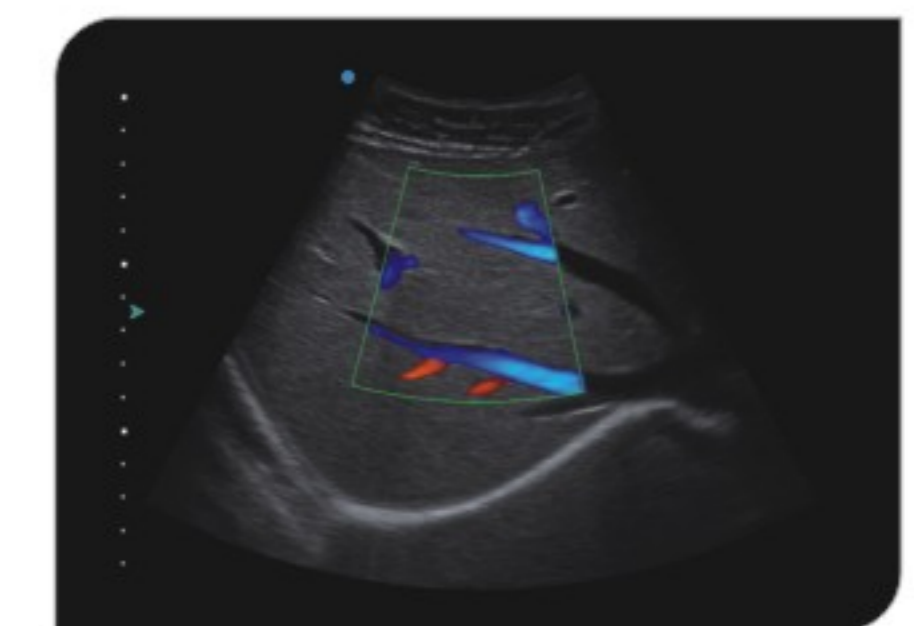
Vertebral artery color mode



MSK 2D mode



Thyroid 2D mode



Abdomen color mode