

MAI

Anything, Anytime, Anywhere
Live Service for Imaging

SIUI

ANDAR

INTERNATIONAL

andarint.com
sales@andarint.com
tel: 1 (305) 254-3737



SIUI



SIUI Healthcare



SIUI1978



SIUI1978

All rights reserved to SIUI 2021
Apogee 6500 EN21220329



Apogee 6500

Digital Color Doppler Ultrasound
Imaging System

SIUI

High-end ultrasound system revolutionizes clinical decision making

Apogee 6500, powered by brand new platform **RealView**⁺, is designed as a high-end ultrasound system to provide comprehensive diagnostic solutions with exceptional imaging performance and streamlined workflow.



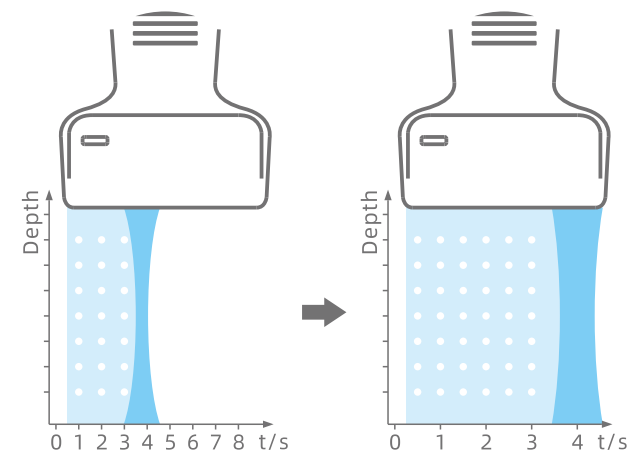
RealView⁺ is SIUI's up-to-date ultrasound imaging platform embodies enhanced scanning efficiency and user-oriented commitment. Advanced imaging technology is employed to present significantly updated image quality at a faster response speed. The platform empowers next-level imaging experience and solutions to satisfy diagnostic demands.

Pixel Echo Zone (PEZ)

During wide band imaging processing, the system automatically collects echo information by larger processing zone to enhance acquisition efficiency and computing speed.

Target Focus

This upgraded technology provides automatic compensation in signal transmission to further improves focus accuracy and image uniformity in the entire image area.



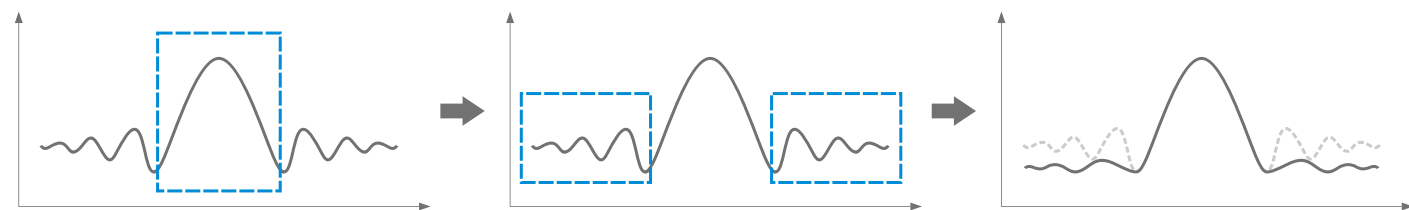
Weighted Fusion (W-Fusion)

Signals in both low and high frequency are simultaneously analyzed and extracted for effective fusion and thus to achieve satisfactory combination of high imaging penetration and resolution.



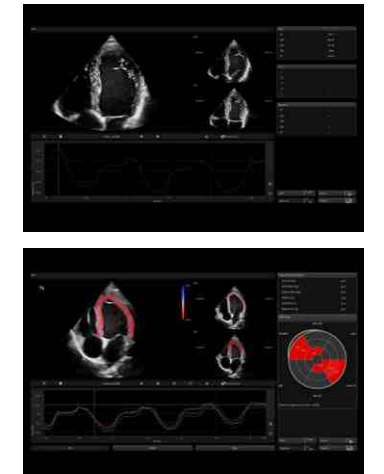
Tailored Filter

Tailored processing will be made for enhancing valid signal and suppressing invalid signals to increase S/N ratio for a better image contrast.



+ Cardiology

Auto cardiac solution kit offers professional measurements for heart diagnosis. Base on 2D speckle tracking, **Auto EF** calculates the most frequently examined parameters like EDV, ESV and EF on one click to assess the systolic function. **Auto SG** is a fully automated analysis tool to quantitative evaluate the myocardial function with precise analysis of LV GLS and LV WMS.



Stress Echo is a well combination of ultrasound scanning and stress test for myocardial motion. It supports better learning of inducible myocardial ischemia and its severity through analyzing how coronary arteries respond to stress.

Professional solution kit satisfies general imaging demand

+ OB/GYN



Auto OB performs measurement automatically to reduce doctor's workload. Major fetal biometry items including HC, BPD, OFD, etc will be calculated and presented instantly with less keystrokes.



Lumi 4D presents real-time and lifelike 4D images of fetus with high resolution and more useful information. The glossiness and light source angle are adjustable for a better display of details.



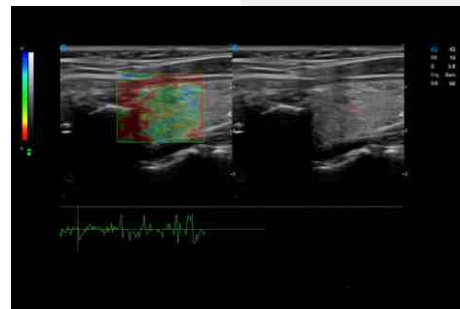
SIUI's **salpingography** offers a safer and more effective way for health evaluation for female reproductive systems. It facilitates the intuitive visualization of oviduct morphology and patency.

+ Radiology



SWE (Shear Wave Elastography) is an advanced integrated measurement tool which enables more precise quantification of tissue stiffness. It's non-invasive and efficient for the diagnosis of chronic liver diseases, hepatic fibrosis, etc.

SIUI's **CHI (Contrast Harmonic Imaging)** delivers clear visualization of tissue structure with minor contrast medium and longer duration. It empowers Apogee 6500 to conduct therapeutic applications on liver, thyroid, etc.



SIUI's **Strain Elastography** provides real-time imaging and quick assessment for lesion stiffness of thyroid, breast, superficial tissue, etc.

Comprehensive transducers expand clinical offerings



Convex probe



Micro convex probe



Linear probe



Phased array probe



Single crystal phased array probe



High density transvaginal probe



Transvaginal volumetric probe



Convex volumetric probe

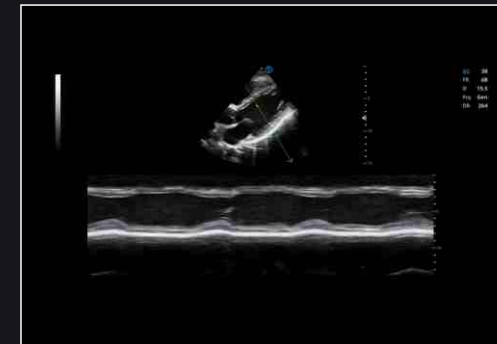


Biplane Probe (One linear one convex)

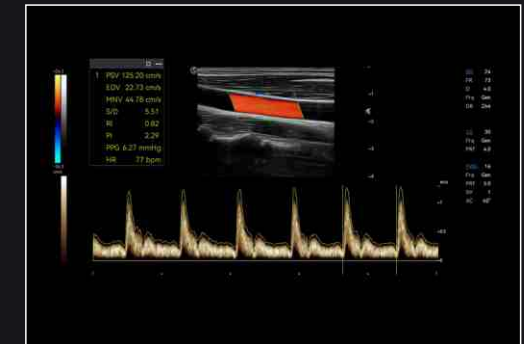


Linear probe (Exclusive for biopsy guide)

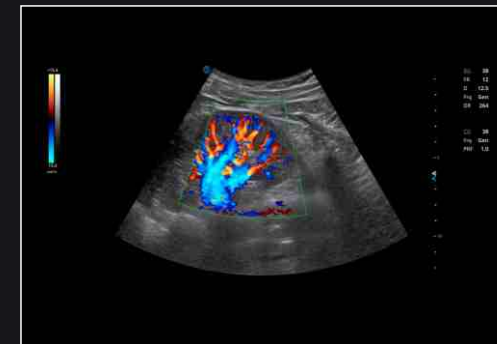
Image Gallery



Left Ventricle AMM



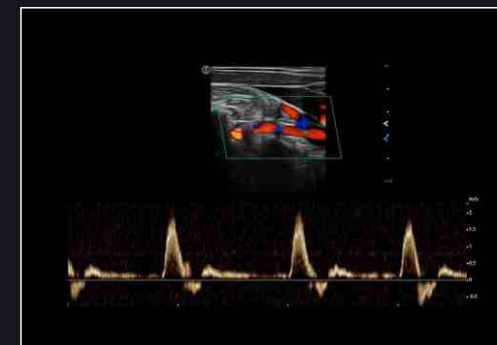
Carotid Artery Auto Trace



Kidney C Mode



Spleen VS Flow



Vertebral Artery PW



Fetal Leg 4D Pro



Forearm Muscles Panoscope



Thyroid Cyst Needle Enhancement

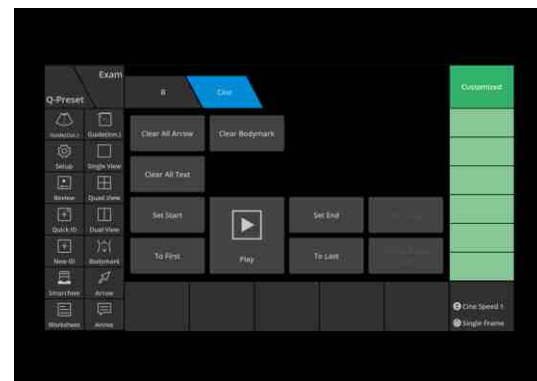
State-of-the-art ergonomic design with efficient workflow

Allocate your precious time in image and diagnosis rather than searching and switching from items and buttons. The efficient workflow is aimed at improving your manipulation experience. Highly customized calculation and measurement tools are available with fewer steps needed.

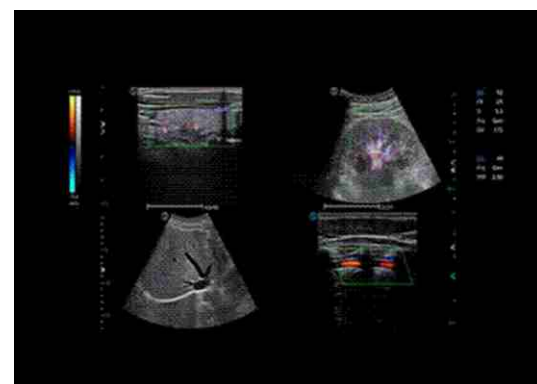
Customized inspection types



Q-preset for quick saving of parameters



Multi-video simultaneous playback



Intuitive navigation layout for clear indication



Multidimensional knob

Five probe connectors



S-station

Personalized editing tools and report templates ease your work



S-view

Simultaneous comparison among images and cines assists your diagnosis



S-helper

Teaching guidance with 3D animation for less-experienced sonographer

