

# *Infa Warmer*j**

**PRODUCT CATALOGUE**



---

## *Infa Warmer*

---

Main Body .....	1
Optional Accessory .....	2
Peripheral .....	8
Disposable / Consumable Items .....	25

# Main Body



\*The drawer shown is optional.

## Infa Warmer i

From the delivery room to NICU.  
Meets wide needs with substantial functions and features.  
Through add-on unit, two kinds of resuscitation unit are available depending on user's demand.

Atom's Code	Description	Power requirements
61633	Infa Warmer i	AC120V ±10%
61634		AC230V ±10%
Features Included		
Temperature control LED lighting lamp CPR Timer Apgar Timer HLstand		
Accessories		
Dust Cover ..... 1		
Skin Temp Probe, 5mm O.D. (Y) ..... 1		
Mattress sheet ..... 1		

### [add-on]

Atom's Code	Description	
61625	SpO <sub>2</sub> Unit	Masimo
61626		Nellcor

The oxygen administration can do safely.  
The SpO<sub>2</sub> cable and the sensor are not included in the standard accessories.

### [add-on]

Atom's Code	Description
61650	Resuscitation Unit P type *1
61651	Resuscitation Unit E type *2
61652	Blender Unit P type *3
61653	Blender Unit E type *4

\*1 : T-Piece Resuscitation Unit with Blender and Suction Unit  
(connect to central piping system)

\*2 : T-Piece Resuscitation Unit with Blender and Suction Unit  
of ejector type to make suction operation possible where no  
suction piping is available.

\*3 : O<sub>2</sub> Blender Unit and Suction Unit (connect to central  
piping system)

\*4 : O<sub>2</sub> Blender Unit and Suction Unit of ejector type to make  
suction operation possible where no suction piping is available.

## Optional Accessory



### Monitor Table for Philips monitor For F-Rail

The monitor table for the Phillips monitor

Atom's Code	Description
60350	Monitor Table for Philips monitor

#### Parts required for mounting the product

The Monitor Table for Phillips monitor is attached to the F-Rail of the main body with the attachment supplied with this product.



### Monitor Table For F-Rail

The monitor table for the GCX-arm

Atom's Code	Description
60349	Monitor Table

#### Parts required for mounting the product

The Monitor Table for GCX-arm is attached to the F-Rail of the main body with the attachment supplied with this product.



### Power Pack i For Dual incu i, Incu i, Infa Warmer i

Warming and humidification are ensured even during transport. The Power Pack i is an uninterruptible power supply (UPS) to protect the unit from power failure or power interruption.

Atom's Code	Description	Power requirements
61623	Power Pack i	AC120V $\pm 10\%$
61624		AC230V $\pm 10\%$

#### Specifications

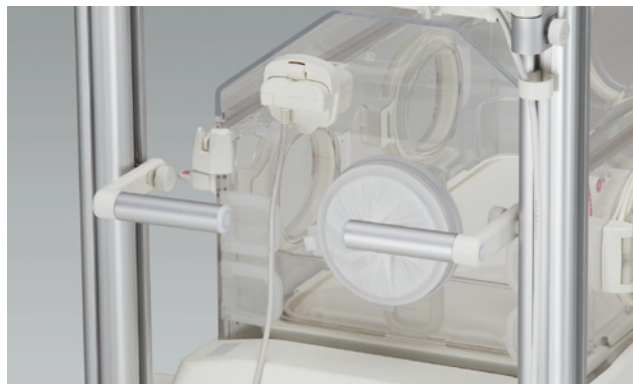
Operable time	About 10~50 minutes
Time required for a completely discharged battery to be fully recharged	About 24 hours

#### Parts required for mounting the product

The Power Pack i is attached to the main body with the mounting parts supplied with this product.



# Optional Accessory



## Handle For F-Rail

The vertical position of the handle can be adjusted easily according to the height of the operator. It is conveniently used to move Incu i or Infa Warmer i to another place.

Atom's Code	Description	Packing Qty
60899	Handle	(2 pcs/set)

### Parts required for mounting the product

The Handle is attached to the F-rail of the main body with the fixing screw supplied with this product.



## Drawer w/mounting bracket, For Infa Warmer i

The drawer with no rails opens and closes so silently that it gives less stress to the patient. You can store small things on the tray in the drawer.

Atom's Code	Description
60988	Drawer
Specifications	
Load capacity	3kg
Dimensions of the tray	431×260×51mm(OD)
Dimensions of the drawer	421×421×138mm(ID)
Storage capacity	24459[cm <sup>3</sup> ]

### Parts required for mounting the product

The Drawer is attached to the main body with the screws supplied with this product.

\* Either the Drawer or the Open Rack can be attached to the main body.



## Open Rack For Infa Warmer i

You can place medical charts and other necessary things on the Open Rack during medical procedures.

Atom's Code	Description
61627	Open Rack
Specifications	
Load capacity	3kg
Dimensions	502×402×133mm(OD)

### Parts required for mounting the product

The Open Rack is attached to the main body with the screws supplied with this product.

\* Either the Open Rack or the Drawer can be attached to the main body.

## Optional Accessory



### Basket w/arm For F-Rail

The vertical position of the basket can be adjusted easily as desired. The basket is deep enough to conveniently accommodate tall containers such as bottles of alcohol disinfectant solutions.

Atom's Code	Description
60894	Basket
Specifications	
Load capacity	3kg
Dimensions	325×195×90mm
Storage capacity	5458[cm <sup>3</sup> ]
Arm length	247mm

### Parts required for mounting the product

The Basket is attached to the F-rail of the main body with the fixing screws supplied with this product.



### Tray Set For F-Rail

The vertical position of the Tray Set can be adjusted easily according to the height of the operator. Its load capacity is sufficient to bear the weight of peripheral devices. With the load capacity of 14kg, this Tray Set can bear the weight of peripheral devices.

Atom's Code	Description
61617	Tray Set
Specifications	
Load capacity	14kg
Dimensions	405×305×15mm
Arm length	300mm

### Parts required for mounting the product

The Tray Set is attached to the F-rail of the main body with the fixing screws supplied with this product.

## Optional Accessory



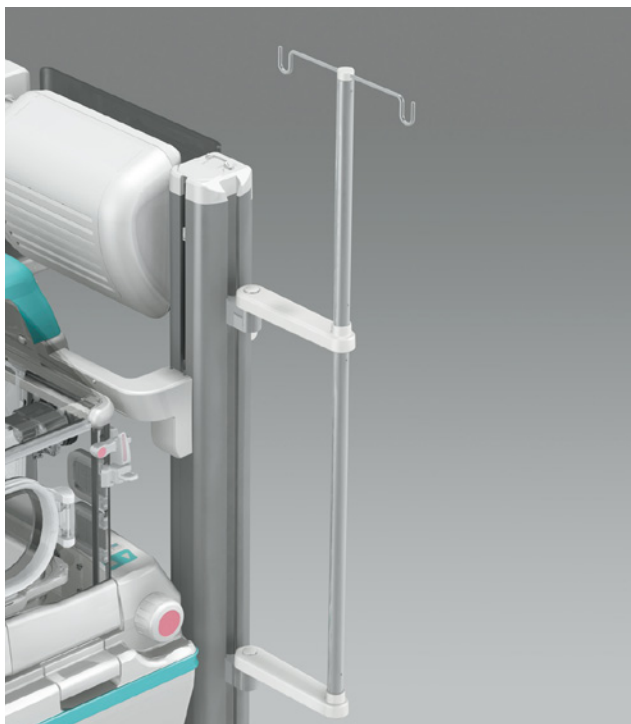
### Tray Set (S) For F-Rail

The vertical position of the Tray Set (S) can be adjusted easily according to the height of the operator. Small instruments necessary for routine medical procedures can be placed on this small tray.

Atom's Code	Description
61618	Tray Set (S)
Specifications	
Load capacity	3kg
Dimensions	320×200×27mm
Arm length	247mm

#### Parts required for mounting the product

The Tray Set (S) is attached to the F-rail of the main body with the fixing screws supplied with this product.



### I.V Pole For F-Rail

I.V pole for the F-rail

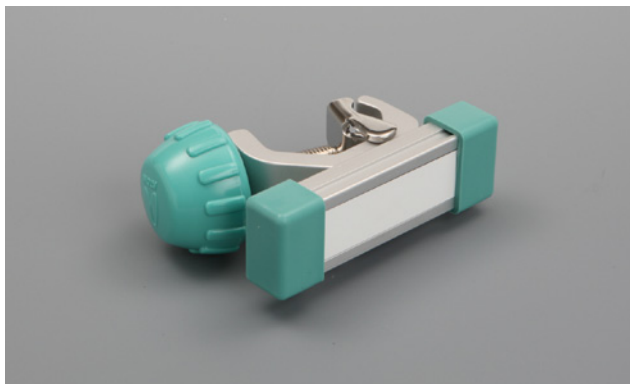
With the load capacity of 10kg, this I.V Pole can bear the weight of various peripheral devices.

Atom's Code	Description
60893	I.V Pole
Specifications	
Load capacity	10kg
Pole length	1050mm

#### Parts required for mounting the product

The I.V Pole is attached to F-Rail of the main body with the fixing screws supplied with this product.

## Optional Accessory



### MF-Rail, 7cm Pole mounting type

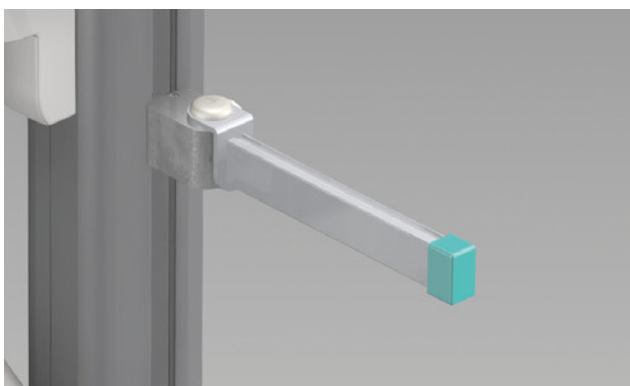
MF-rail of the pole mounting type

Use this rail to mount the peripheral devices attachable to the MF-rail to the I.V pole.

Atom's Code	Description
60306	MF-Rail, 7cm
Specifications	
Rail length	7cm

#### Parts required for mounting the product

The I.V Pole (Atom's Code: 60893) or the Crank Type I.V Pole (Atom's Code:60892) is necessary.



### MF-Rail For F-Rail (Left & Right)

MF-rail of the rail mounting type

Use this rail to mount the peripheral devices attachable to the MF-rail to the F-rail.

Atom's Code	Description
61616	MF-Rail
Specifications	
Load capacity	5kg
Rail length	225cm

#### Parts required for mounting the product

The MF-rail is attached to the F-rail of the main body with the fixing screws supplied with this product.



### Drainage Hanger For Infa Warmer i

The Drainage Hanger is used to hang a low-pressure continuous aspirator or a drainage bag on the Infa Warmer i.

Atom's Code	Description	Packing Qty
61642	Drainage Hanger	(2 pcs/pkg)
Specifications		
Load capacity	2kg	

#### Parts required for mounting the product

The Drainage Hanger is attached to the main body with the mounting parts supplied with this product.

## Optional Accessory



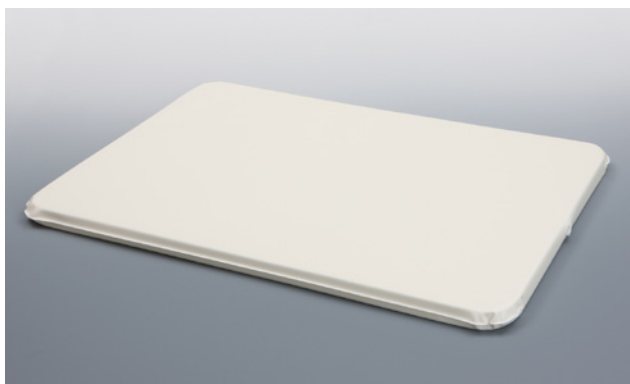
### Tube Holder For Infa Warmer i, V-505

The Tube Holder for Infa Warmer i is attached to the baby guard at the head end of the incubator to hold the patient circuit securely in place.

Atom's Code	Description
60871	Tube Holder

### Parts required for mounting the product

The Tube Holder is attached to the baby guard.



### Pressure Dispersion Mattress For Infa Warmer i

The Pressure Dispersion Mattress for the Infa Warmer i provides constant comfort and reduces the patient's stresses due to bedsores.

Atom's Code	Description
61628	Pressure Dispersion Mattress

## Peripheral Neo-Light



### Neo-Light

With an LED light and hand sensor, both brightness and hygiene have been incorporated into this examination light.

- LED light of 35,000 lux is used.
- The light can be turned on and off by waving your hand underneath the sensor.
- Required only 30% energy of conventional halogen light.

Atom's Code	Description	Power requirements
60215	Neo-Light	AC100~240V
Accessories		
Attachment .....	1	
Bracket .....	1	
AC adapter .....	1	
Power cord(SE plug) .....	1	
Power cord(A plug) .....	1	

### Specifications

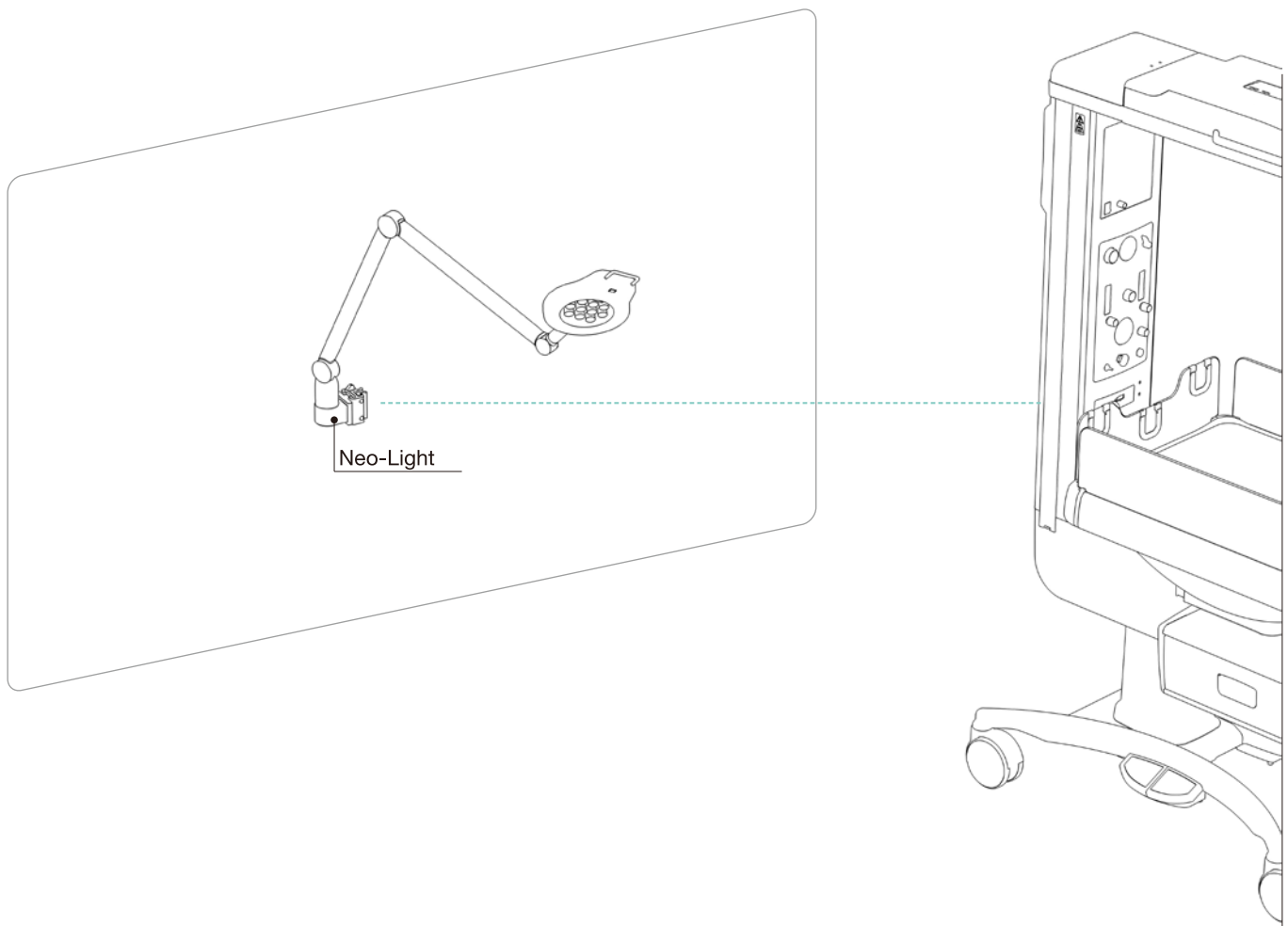
Light source	LED lamps
Illumination intensity	At least 35,000lx

### Parts required for mounting the product

The Neo-Light is attached to the F-Rail of the main body with the attachment supplied with this product.

## Peripheral Neo-Light Diagram

---



## Peripheral Safety Flow OX-248,OX-240



### Safety Flow

The float (ball) in the flowmeter moves up and down to clearly reflect the oxygen flow. This helps the operator adjust the flow rate easily.

Atom's Code	Description	Model No.	Intended use	How to mount the product
61222	Safety Flow	OX-248	For a piping system	Rail mounting type
60357		OX-240		

### Parts required for mounting the product

For the rail mounting type, the MF-Rail (Atom's Code:61616) is necessary.

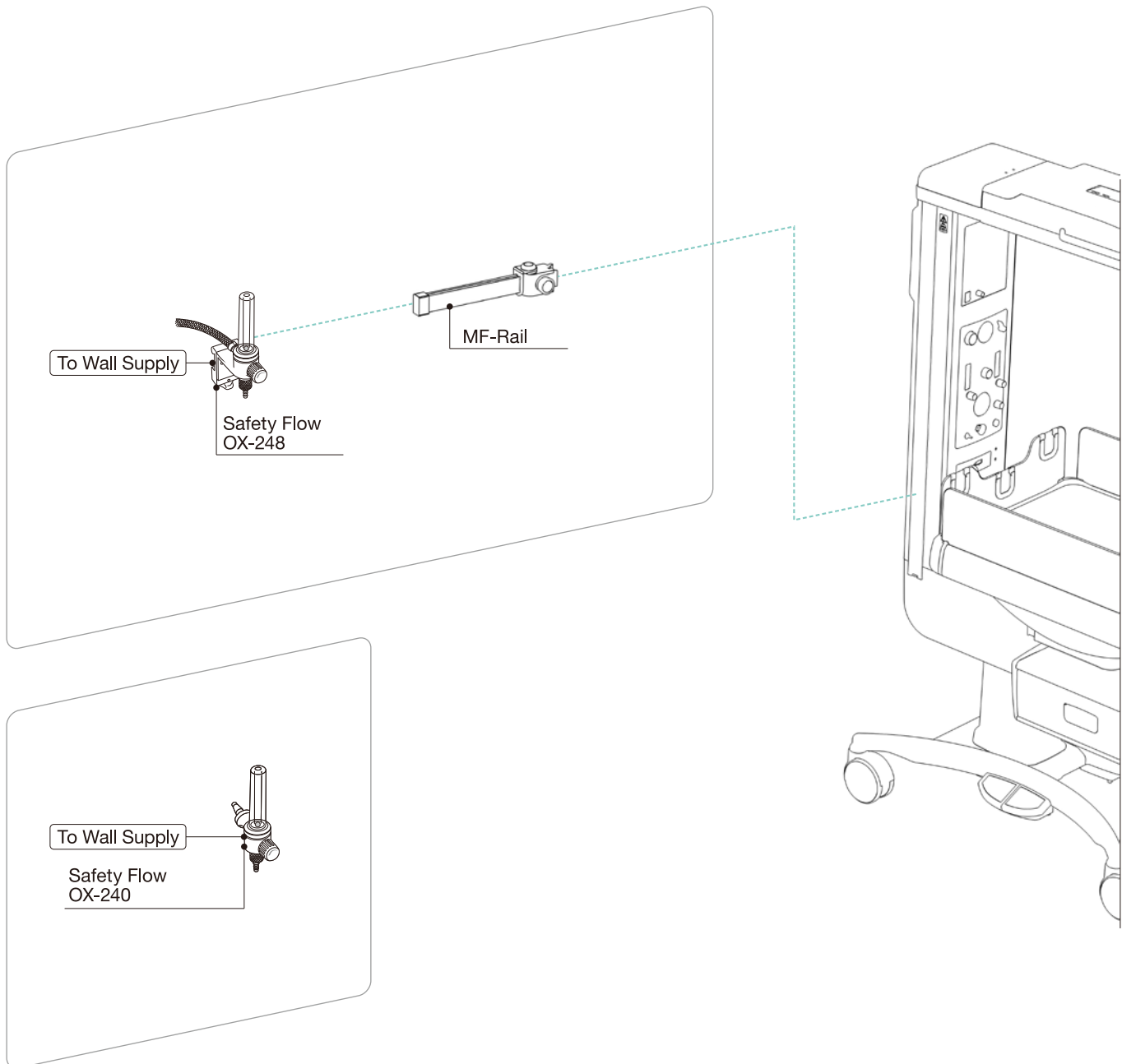


### Humidifier Bottle OX-230

Atom's Code	Description
60241	Humidifier Bottle OX-230



## Peripheral Safety Flow OX-248,OX-240 Diagram



## Peripheral Yox Model S401D / Yox Model S401A



### Yox Aspirator

- Yox Model S401D is a compact size aspirator with a disposable liner to keep it always clean.
- Yox Model S401A is a reusable aspirator.

Atom's Code	Description
60356	Yox Model S401D (Liner type), 500mL
<b>Specifications</b>	
Capacity of the liner	500mL
Adjustable suction pressure range	0~-80kPa
<b>Accessories</b>	
Piping Connecting Hose for Suction .....	1
Suction Hose .....	1
Dispo Liner .....	1

\* The Dispo Liner is necessary as a consumable. For more information, see p. 30.



Atom's Code	Description
61228	Yox Model S401A Aspirator, 1200mL
<b>Specifications</b>	
Capacity of the bottle	1200mL(1000mL up to the FULL level)
Adjustable suction pressure range	0~-80kPa
<b>Accessories</b>	
Piping Connecting Hose for Suction .....	1
Suction Hose .....	1

### Parts required for mounting the product

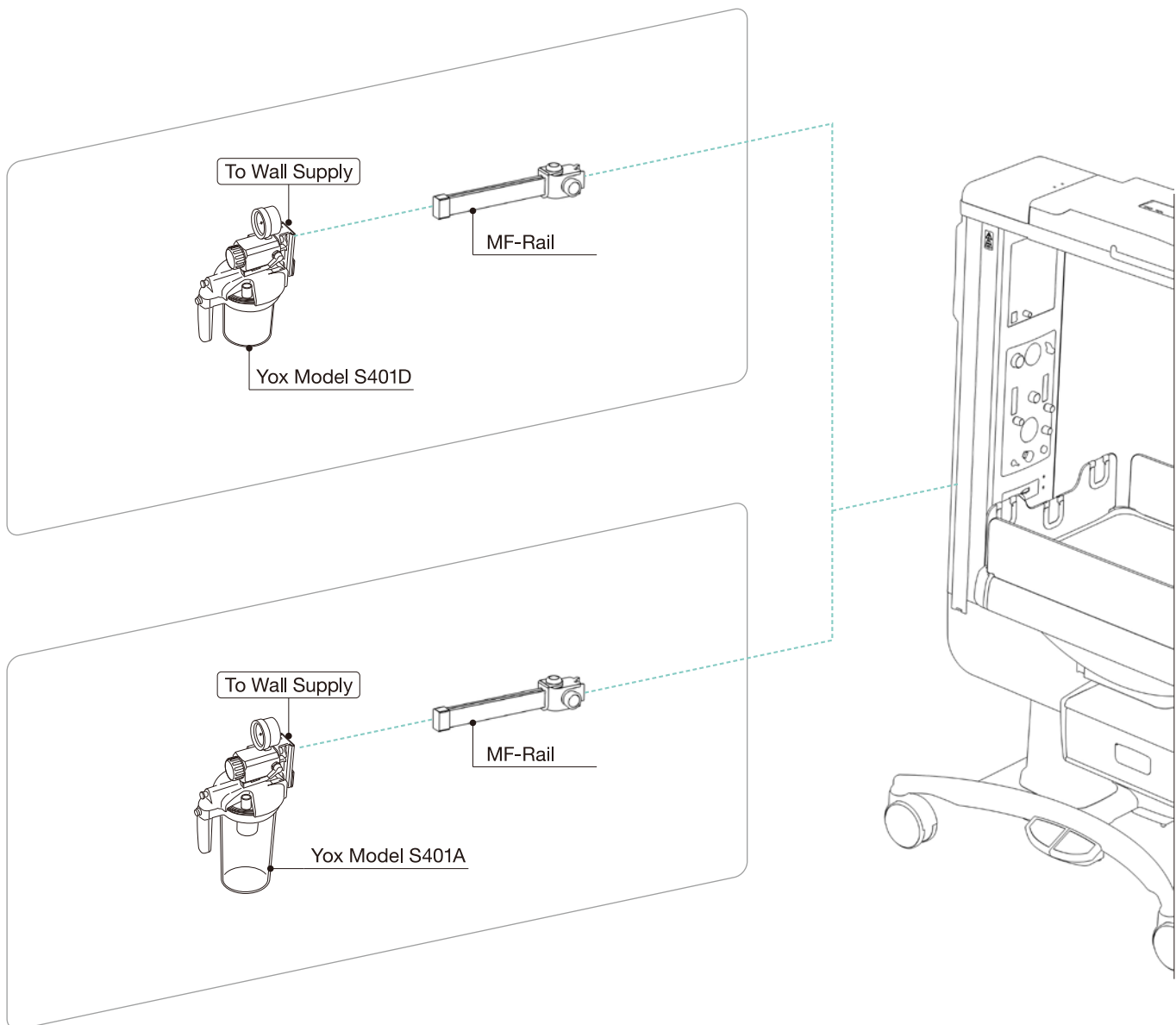
The MF-Rail (Atom's Code:61616) is necessary.



### Suction Canister, 500mL For S401D

Atom's Code	Description
61619	Suction Canister, 500mL

## Peripheral Yox Model S401D / Yox Model S401A Diagram



## Peripheral ATOM SYRINGE PUMP S-1235



### ATOM SYRINGE PUMP S-1235

The ATOM SYRINGE PUMP S-1235 incorporates many safety features

- Quadruple checking ensures proper attachment of the syringe.
- Occlusion pressure is displayed on the trend graph.
- The function to prevent operation errors is provided.

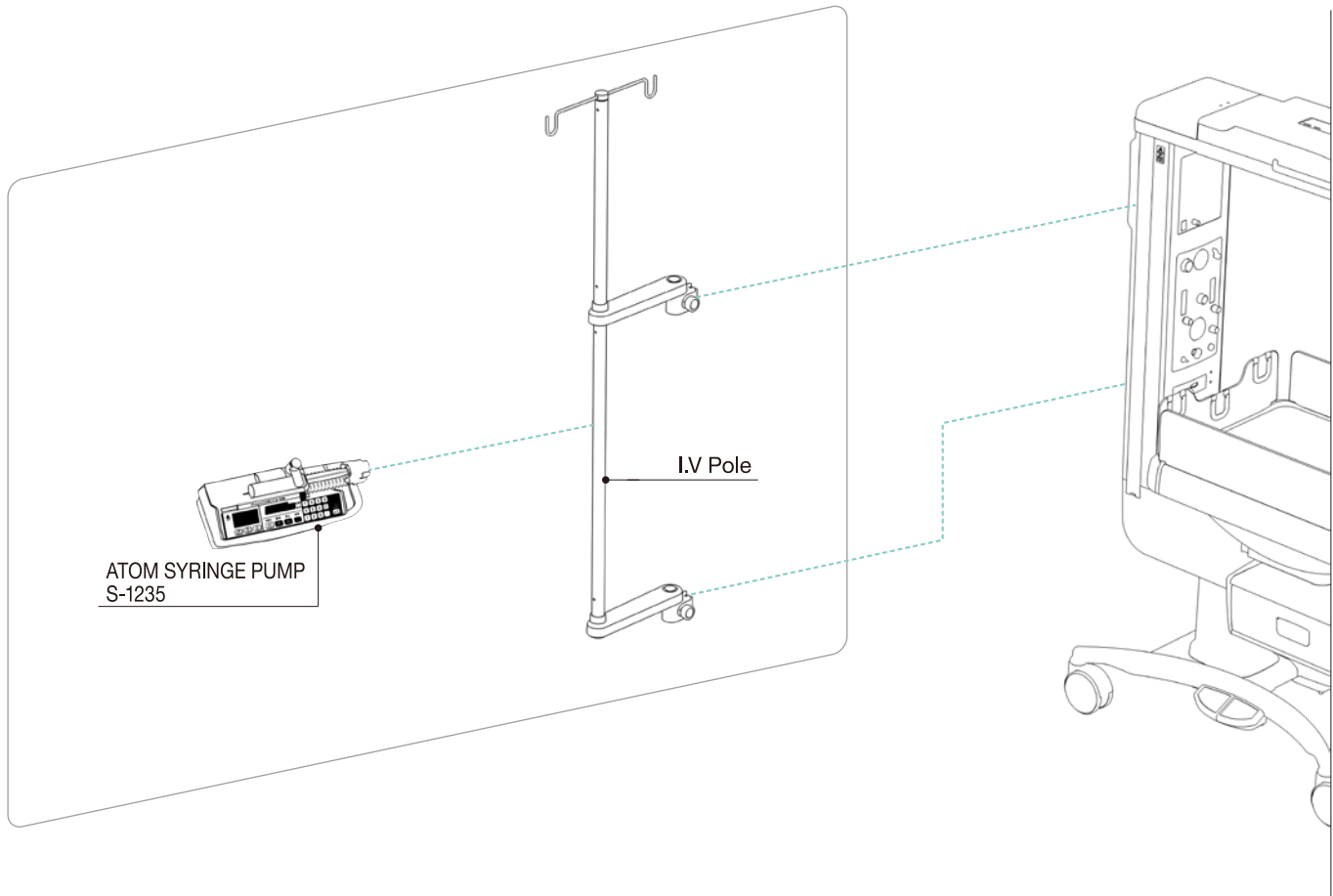
Atom's Code	Description	Power requirements
62145	ATOM SYRINGE PUMP S-1235	AC120V
62140		AC220V~AC240V
Specifications		
Battery capacity	Lithium-ion battery The syringe pump is operable for approx. three hours when powered by a fully charged battery (at least about 10 hours of charging are required when the power switch is off.)	
Flow rate setting range	0.1~1200mL/h (in 0.1mL/h increments)	
Prime flow rate	100~300mL/h for a 10, 20 or 30mL syringe; 100~1200mL/h for a 50mL syringe	
Flow rate accuracy	Mechanical accuracy: within±1% Accuracy when a syringe is used:within±3%	
Detection of occlusion pressure	20~140kPa	
Accessories		
Mounting table for the syringe pump ..... 1		

### Parts required for mounting the product

The I.V Pole (Atom's Code:60893) or the Crank Type I.V Pole (Atom's Code:60892) is necessary.

\*NOTE : except for US.

## Peripheral ATOM SYRINGE PUMP S-1235 Diagram



## Peripheral Pressure Regulator OX-231,OX-232 / Safety Flow OX-202



### Pressure Regulator

The pressure regulator for a cylinder with G type valve

Atom's Code	Description	Model No	Intended use
61226	Pressure Regulator	OX-231	For Oxygen Cylinder, Screw Type
61227		OX-232	For Air Cylinder, Screw Type



### Safety Flow

The float (ball) in the flowmeter moves up and down to clearly reflect the oxygen flow. This helps the operator adjust the flow rate easily.

Atom's Code	Description	Model No.	Intended use
61225	Safety Flow	OX-202	For a cylinder (with pressure regulator)



### Cylinder Rack For F-Rail

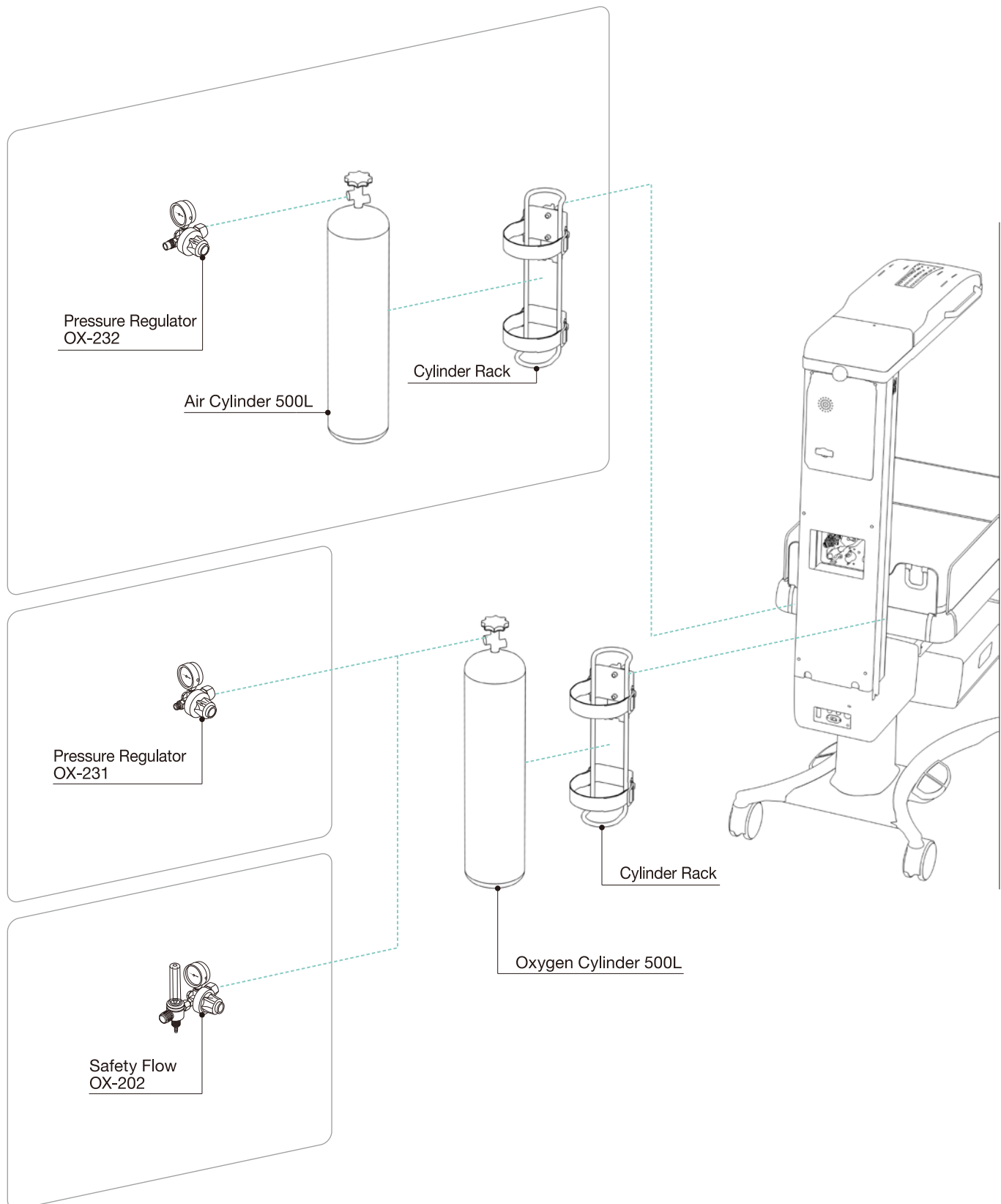
The rack for holding a 500L cylinder

Atom's Code	Description
60895	Cylinder Rack

#### Parts required for mounting the product

The Cylinder Rack is attached to the F-Rail of the main body with the fixing screws supplied with this product.

## Peripheral Pressure Regulator OX-231,OX-232 / Safety Flow OX-202 Diagram



# Peripheral Weight Monitor Unit



## Weight Monitor Unit

The weight monitor for the Infa Warmer i  
You can weigh the baby placed on the mattress platform  
whenever necessary.

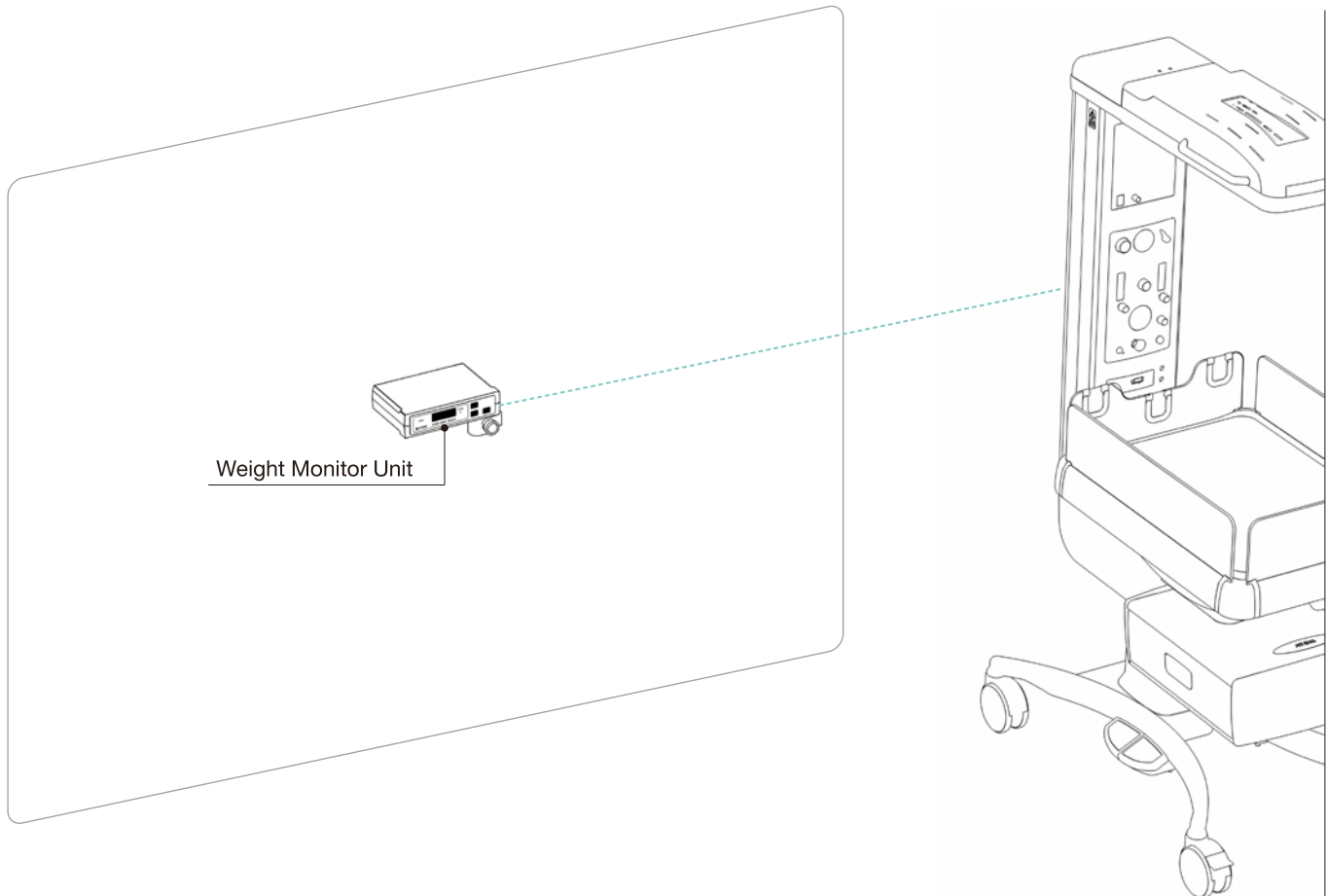
Atom's Code	Description	Power requirements
61640	Weight Monitor Unit	AC120V ±10%
61641		AC230V ±10%
Specifications		
Weighing range		300~7000g

### Parts required for mounting the product

The Weight Monitor Unit is attached to the F-Rail of the main body  
with the display table supplied with this product.



## Peripheral Weight Monitor Unit Diagram



## Peripheral BILI-THERAPY Spot Type / BILI-THERAPY Pad Type

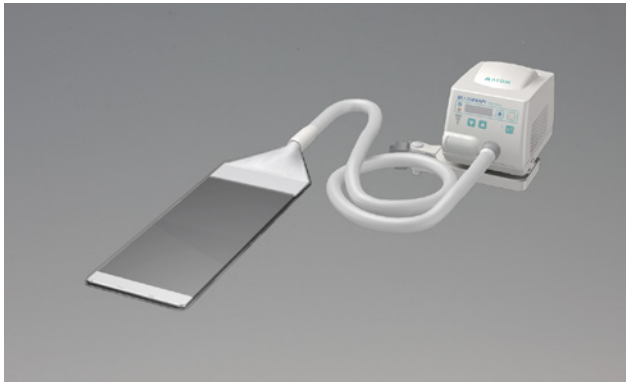


### BILI-THERAPY Spot Type

Effective Phototherapy Treatment and Space-saving

- Effective phototherapy treatment by blue LED  
Promote early hospital discharge by reducing the treatment time in providing high irradiation intensity and effective wavelength.
- Space-saving  
The unit can be mounted on the F-Rail without using a stand for space-saving around the incubator or warmer.
- Switchable to examination lamp with one-touch of a button.  
As an examination lamp, the condition of an infant can be monitored. (White LED)

\*Coming soon



### BILI-THERAPY Pad Type

Pad-type Phototherapy Unit good for Kangaroo-care

- Effective light treatment by blue LED  
Supports early hospital discharge by reducing the treatment time with high irradiation intensity and effective wavelength.
- Enables the light treatment by fiber irradiation while holding a baby  
The light treatment while holding a baby is possible because the irradiation area is soft fiber.
- Enables to use widely  
The device can be used widely for bassinet as well as infant incubator and infant warmer.

\*Coming soon

## Peripheral Respi Care Flow / Respi Care Flow with Blender



### Respi Care Flow

The T-piece resuscitator with enhanced safety and operability for every operator

- Consistent and stable PIP can be applied.
- Stable PEEP can be applied.
- You can apply a desired pressure with your thumb and adjust the inspiratory time easily. This also reduces your burden of squeezing and releasing the bag repeatedly for a long period of time.

\*Coming soon



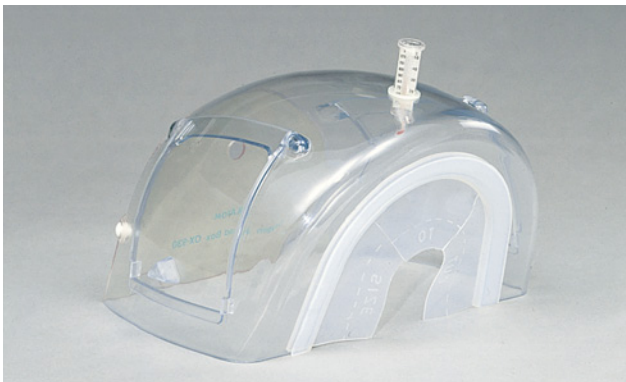
## Peripheral



### Atom Head Frame

The Atom Head Frame holds the patient circuit tubes and the patient's head securely.

Atom's Code	Description
60846	Atom Head Frame



### Atom Oxygen Head Box OX-930

An oxygen concentration of 90% or higher is achieved in a short period of time.

Atom's Code	Description
60220	Atom Oxygen Head Box OX-930



### ATOM FEEDING SYRINGE HOLDER

The Feeding Syringe Holder is intended for automatic feeding. The feeding rate can be adjusted by adjusting the angle of the holder.

Atom's Code	Description
60078	ATOM FEEDING SYRINGE HOLDER

## Peripheral



### Cord Holder For F-Rail

The Cord Holder of the rail mounting type  
The Cord Holder holds various cords and cables in place on the F-rail and helps keep them tidy.

Atom's Code	Description	Packing Qty
61071	Cord Holder	(5 pcs/pkg)



### Hose Set for Oxygen and Air,2m for Blender-Pressure Regulator,Screw Type

Atom's Code	Description
60351	Hose Set for Oxygen and Air, 2m



### Hose for High-pressure Oxygen,1m for Pressure Regulator,Screw Type

Atom's Code	Description
60352	Hose for High-pressure Oxygen, 1m

# Peripheral

---



**Hose for High-pressure Air,1m**  
for Pressure Regulator,Screw Type

Atom's Code	Description
60353	Hose for High-pressure Air, 1m



**Connecting Hose for Piping**

Atom's Code	Description
60300	Connecting Hose for Piping

## Disposable / Consumable Items Masimo Diagram

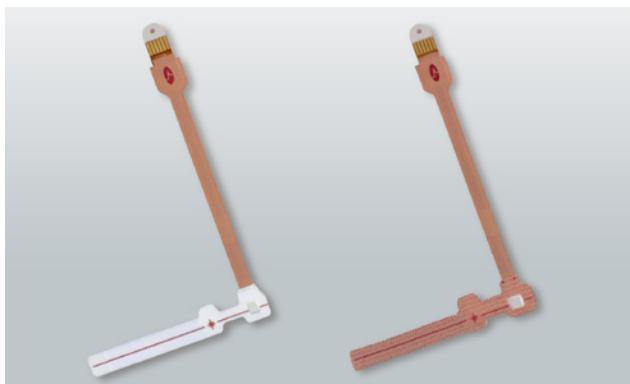


### Red LNOP Patient Cables (Masimo)

The SpO<sub>2</sub> cable manufactured by Masimo for the pulse oximeter built into the incubator. Three types of cables of different length are available for your needs.

Description	Cable length
Red PC - 04	1.2m
Red PC - 08	2.4m
Red PC - 12	3.6m

For more information about other sensors and cables, please contact to the local distributor.



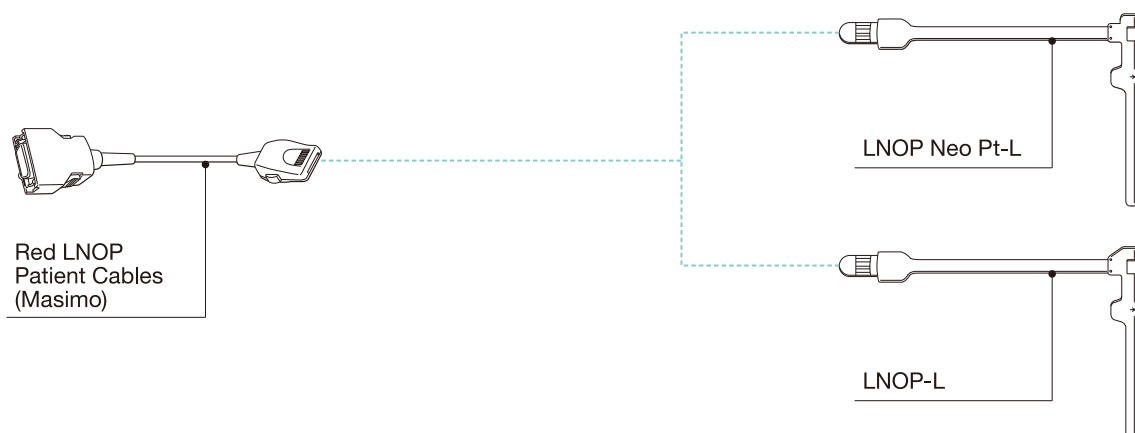
### LNOP Sensors

The LNOP Sensor is a disposable sensor for the pulse oximeter built into the incubator. It is an adhesive type sensor available in two different sizes according to the baby's weight. You can obtain measurements even during motion conditions and low perfusion conditions. It is less affected by noise interference.

Description	Indication
LNOP Neo Pt-L	Body weight: less than 1kg
LNOP-L	Body weight: less than 3kg

For more information about other sensors and cables, please contact to the local distributor.

## Masimo Diagram



## Disposable / Consumable Items

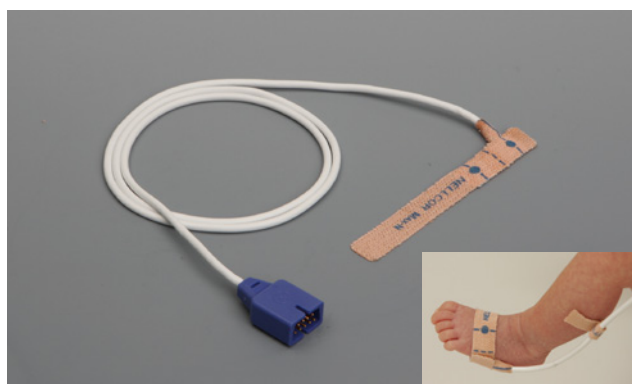


### DOC-4 Pulse Oximetry Cable (Nellcor)

The SpO<sub>2</sub> cable manufactured by Nellcor for the pulse oximeter built into the incubator.

Description
DOC-4 Pulse Oximetry Cable (Nellcor)

For more information, please contact to the local distributor.

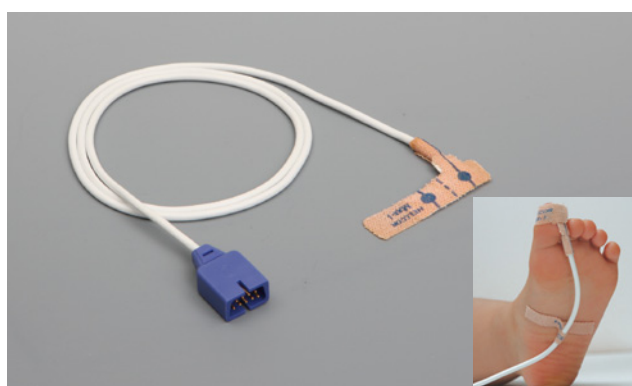


### Nellcor OXIMAX MAX-N For Neonate

The Nellcor OXIMAX MAX-N is a disposable sensor for the pulse oximeter built into the incubator. It is an adhesive type sensor intended for a neonate weighing less than 3kg. The sensor prevents the effects of external interference and provides precise measurements.

Description	Indication
Nellcor OXIMAX MAX-N	Body weight: less than 3kg

For more information, please contact to the local distributor.



### Nellcor OXIMAX MAX-I For Infant

The Nellcor OXIMAX MAX-I is a disposable sensor for the pulse oximeter built into the incubator. It is an adhesive type sensor intended for an infant weighing less than 3~20kg. The sensor prevents the effects of external interference and provides precise measurements.

Description	Indication
Nellcor OXIMAX MAX-I	Body weight : less than 3~20kg

For more information, please contact to the local distributor.



## Disposable / Consumable Items Nellcor Diagram



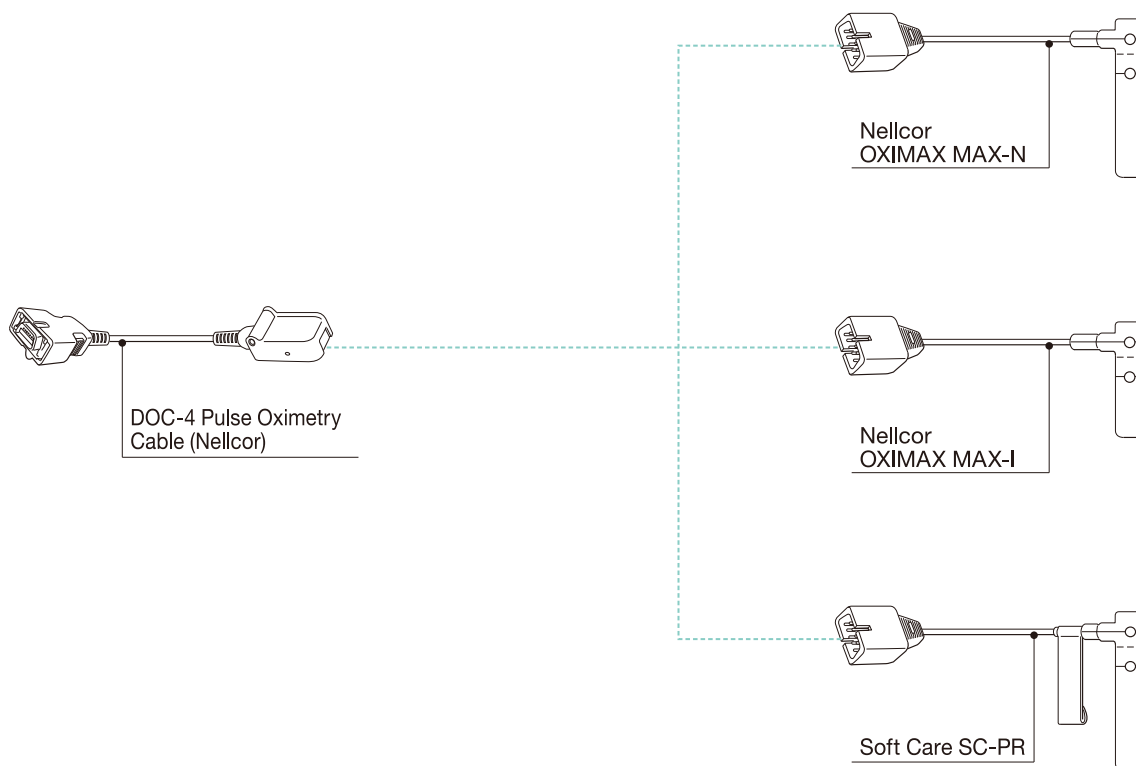
### Soft Care SC-PR

The Soft Care SC-PR is a disposable sensor for the pulse oximeter built into the incubator. It is a non-adhesive type sensor designed for the delicate skin of a baby weighing less than 1.5kg. The sensor uses a thin cable optimum for the care of an extremely small patient.

Description	Indication
Soft Care SC-PR	Body weight : less than 1.5kg

For more information, please contact to the local distributor.

## Nellcor Diagram



## Disposable / Consumable Items



### Skin Temp Probe

When a Skin Temp Probe (W) is used in combination with a Skin Temp Probe (Y), the patient's skin temperature at two different sites can be monitored at the same time.

Atom's Code	Description	Packing Qty
60883	Skin Temp Probe, 5 mm O.D. (Y)	1 piece
60881	Skin Temp Probe, 5 mm O.D. (W)	1 piece
60882	Skin Temp Probe, 10 mm O.D. (Y)	1 piece
60880	Skin Temp Probe, 10 mm O.D. (W)	1 piece



### Connecting Cable For Dispo Skin Temp Probe

Connecting cable for the Dispo Skin Temp Probe for the i series incubators. It is used to connect a Dispo Skin Temp Probe to the skin temp probe connecting port of the incubator.

Atom's Code	Description	Packing Qty
60885	Connecting Cable (Y)	1 piece
60891	Connecting Cable (W)	1 piece



### Dispo Skin Temp Probe

When a Dispo Skin Temp Probe (W) is used in combination with a Dispo Skin Temp Probe (Y), the patient's skin temperature at two different sites can be monitored at the same time. A separate "Connecting Cable" is necessary for each Dispo Skin Temp Probe.

Atom's Code	Description	Packing Qty
60884	Dispo Skin Temp Probe (Y)	(10 pcs/box)
60890	Dispo Skin Temp Probe (W)	(10 pcs/box)

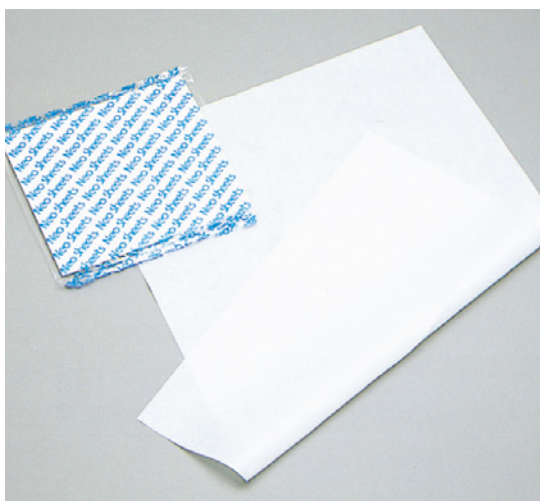
## Disposable / Consumable Items



### Neck Pad

This silicone based pad for the Atom Oxygen Head Box OX-930 prevents oxygen from leaking out of the Oxygen Head Box.

Atom's Code	Description	Packing Qty
60268	Neck Pad	(5 pcs/pkg)



### Neo Sheets

The disposable sheets made of nonwoven fabric are soft, highly hygroscopic and breathable.

Atom's Code	Description	Dimensions	Packing Qty
60337	Neo Sheets	100×75cm	(100 pcs/box)



### Mattress Sheet

100% cotton

Atom's Code	Description	Dimensions	Packing Qty
60321	Mattress Sheet	100×100cm	(5 pcs/pkg)

## Disposable / Consumable Items



### Baby Card

The sticker type card, directly attachable to the hood of the incubator, is easy to remove and reapply.

Atom's Code	Description	Color	Packing Qty
67100	Baby Card	Blue	(50 pcs/box)
67101		Pink	(50 pcs/box)



### Dispo Liner, 500mL For S401D, Suction Canister

Disposable liner for the Yox Model S401D and the Suction Canister

Atom's Code	Description	Packing Qty
60355	Dispo Liner, 500mL	(30 pcs/box)



### Tube for Pressure Measurement For Infa Warmer i

Tube for pressure measurement with the manometer contained in the Blender Unit P type or the Blender Unit E type  
The tube is connected to a Jackson Rees Circuit, etc. to have the internal pressure of the circuit indicated on the pressure gauge

Atom's Code	Description	Packing Qty
61629	Tube for Pressure Measurement	1 piece

## Disposable / Consumable Items



### Patient Circuit For Respi Care Flow

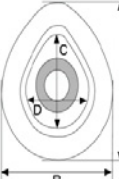
Patient circuit intended for use with the Respi Care Flow

Atom's Code	Description	Packing Qty
60354	Patient Circuit	(5 pcs/box)



### Face Mask

The soft and air cushioned face mask fits well on the face. The air pressure is adjustable to achieve comfortable airtight seal. The transparent material used for the face mask allows a clear view of the patient's mouth, so that the medical staff can check the patient's complexion and recognize any vomit easily. Latex-free to eliminate allergy concerns

Atom's Code	Description	Intended use	Packing Qty	
60143	Face Mask	For Neonatal	(20 pcs/box)	
60144		For Infant	(20 pcs/box)	
		Size	For Neonate	For Infant
		A	65	79
		B	55	67
		C	41	49
		D	28	35



### Test Bag, 50 ml

Bag for setting the pressure of the Respi Care Flow

Atom's Code	Description	Capacity	Packing Qty
60298	Test Bag, 50 ml	50mL	(5 pcs/pkg)

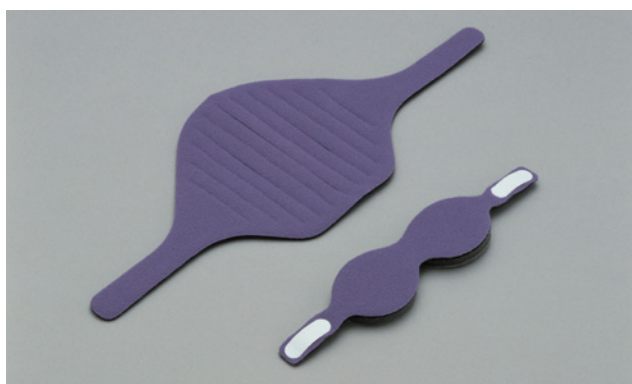
## Disposable / Consumable Items



### Cover Baby

The Cover Baby is used to fix the skin temp probe.  
The aluminum coated cover prevents the skin temp probe from being affected by the heater for accurate skin temperature measurements.

Atom's Code	Description	Packing Qty
60312	Cover Baby	(80 pcs/box)



### Eye Mask

The Eye Mask protects the baby's eyes from phototherapy beams.  
Easily attachable with the Velcro straps for proper fit on the back of the baby's head, the Eye Mask can be fixed securely in place.

Atom's Code	Description	Size	Packing Qty
60289	Eye Mask	SS (head circumference:less than 28cm)	(5 pcs/pkg)
60288		S (head circumference:28~34cm)	(5 pcs/pkg)
60287		M (head circumference:over 34cm)	(5 pcs/pkg)



### Jackson Rees Circuit

The APL valve is used to protect the lungs from excessive pressure.  
The variable valve is adjustable in the range of 0 ~ 60 cmH<sub>2</sub>O.  
When the Jackson Rees Circuit with suction port is used, suctioning can be performed with the circuit attached to the patient.  
Latex-free to eliminate allergy concerns

Atom's Code	Description	Intended use	Bag capacity	Suction port	Packing Qty
60140	Jackson Rees Circuit	For Neonatal	0.5L	Not attached	1 piece
60141				Attached	1 piece
60142		For Infant	1L	Attached	1 piece

## **Disposable / Consumable Items**

---

---

**Manufacturer: ATOM MEDICAL CORPORATION**  
<http://www.atomed.co.jp>

**Exporter: ATOM MEDICAL INTERNATIONAL, INC.**  
Iwakata Bldg., 3-18-16, Hongo, Bunkyo-ku, Tokyo, JAPAN  
Phone: + 81 3 3815 2941 Fax: + 81 3 3812 9670/4080  
URL: <http://www.atom-ami.co.jp>