



Large-angle tiltable screen without blind angle

SIUI MAI provides remote diagnostic support

Detachable Li-ion battery without shut-down facilitates easy move

Dual sockets enable easy replacing of transducers to meet different anesthesia demands

Liftable trolley applies to different height of operation

Four universal wheels empowers quick move

See the future  
**SIUI**

**ANDAR**  
INTERNATIONAL

andarint.com  
sales@andarint.com  
tel: 1 (305) 254-3737



# Apogee 2300

Color Doppler Ultrasound Imaging Solution

*Exclusive for  
Urology & Anorectal*

**SIUI**



# Apogee 2300

Color Doppler Ultrasound Imaging Solution

## Diagnostic confidence comes from promising image quality and capability

The portable color Doppler Apogee 2300 is endowed with SIUI's core technology to conduct excellent image performance with surprising processing speed. Equipped with its ergonomic compact design, detachable lithium battery, user-friendly software and hardware design, and all kinds of application probes, Apogee 2300 proves its advantages over other ways in different operations like needle biopsy, drug delivery location and other demands in urology and anorectal.



### Convex Probe

Examination method: transabdominal

Examination parts:

liver, kidney, urology, etc.

Needle Biopsy: percutaneous

Advantages: convenient diagnosis without discomfort



### Transrectal Linear Probe

Examination method: transrectal

Examination parts:

prostate, anal fistula, perianal abscess, rectal cancer, etc.

Needle Biopsy: transperineal

Advantages: It's capable of examination and needle biopsy of different parts.

And the probe with smaller radius reduces the discomfort of patients.

### Transrectal Bi-plane Probe (with one convex and one linear)

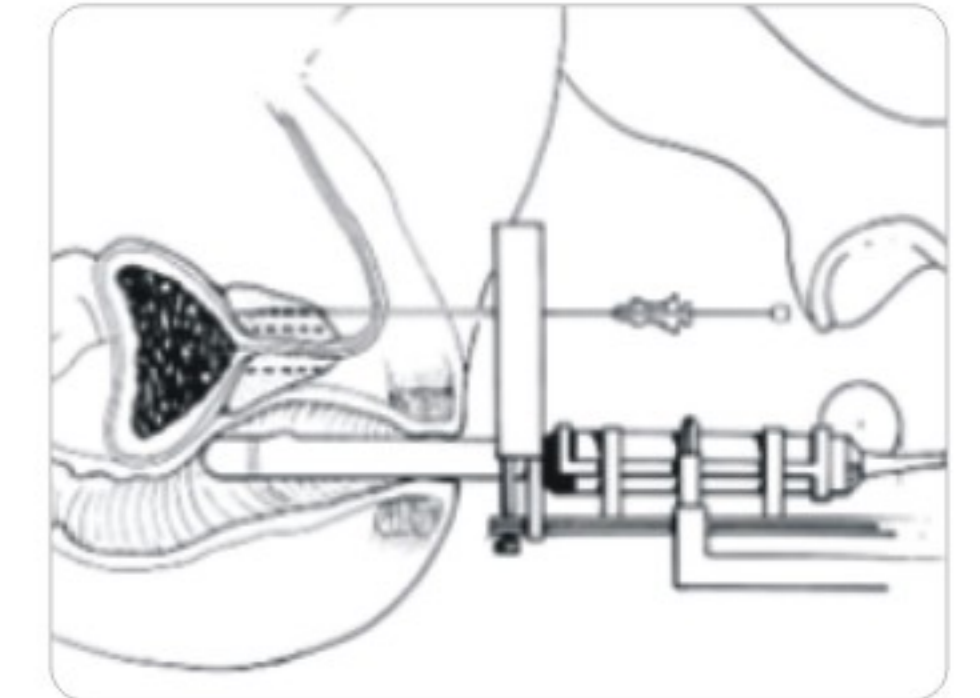
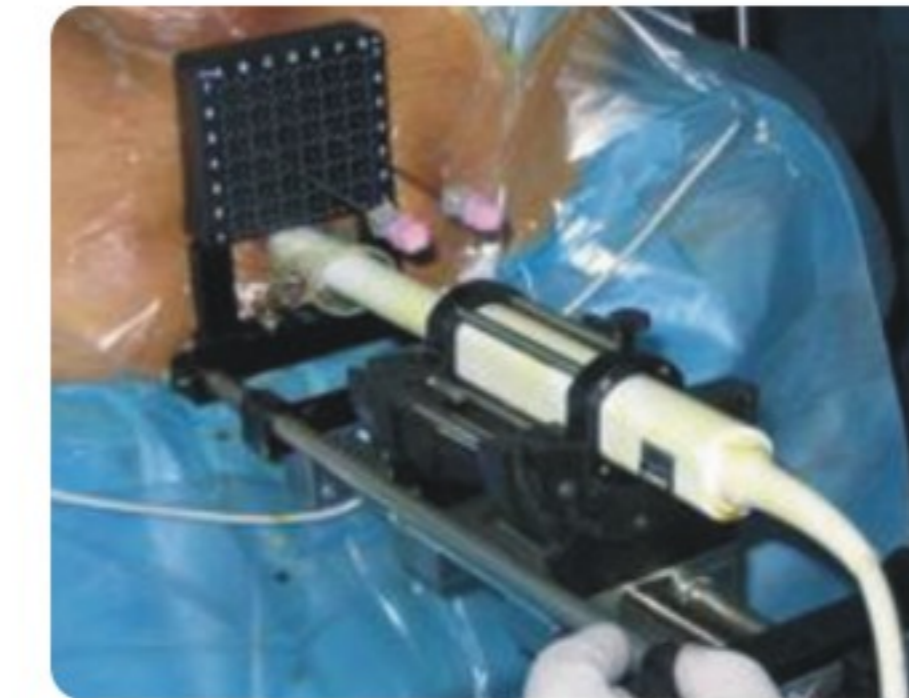
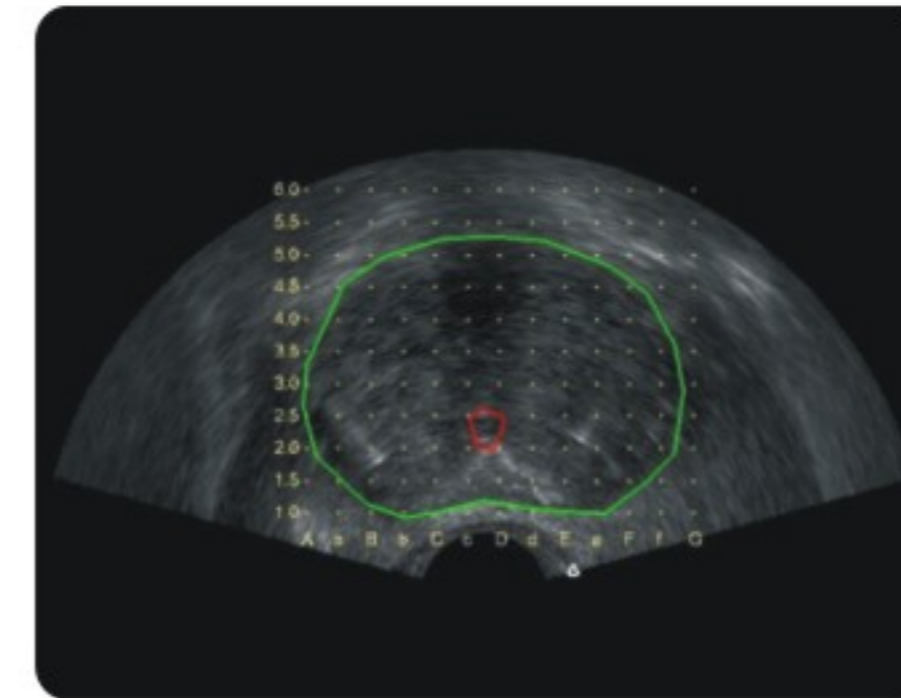
Examination method: transrectal

Examination parts: prostate, anal fistula, perianal abscess, rectal cancer, etc.

Needle Biopsy: transperineal

Advantages:

1. Large angle of the convex array enables a large imaging area which allows to display complete structure of the prostate.
2. The linear array is more suitable for the examination of rectum and crissum.
3. It's applicable for the transperineal saturation biopsy, drug delivery location, brachytherapy, etc.



### Linear Probe

Examination method: percutaneous

Examination parts: kidney, etc.

Needle Biopsy: percutaneous

Advantages: The needle passes through the array without any blind area which is applicable for clinical demands.

### Transrectal Bi-plane Probe (with dual convex)

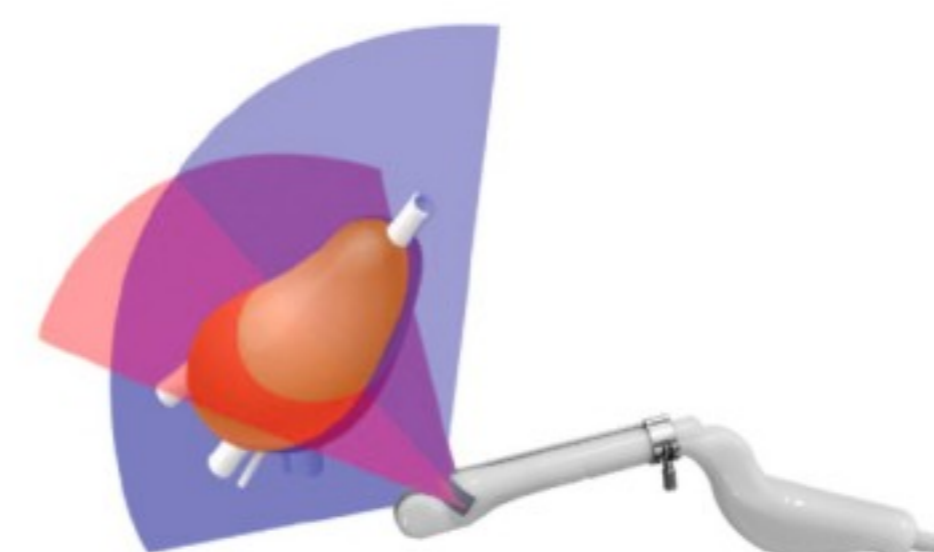
Examination method: transrectal

Examination parts: prostate

Needle Biopsy: transrectal

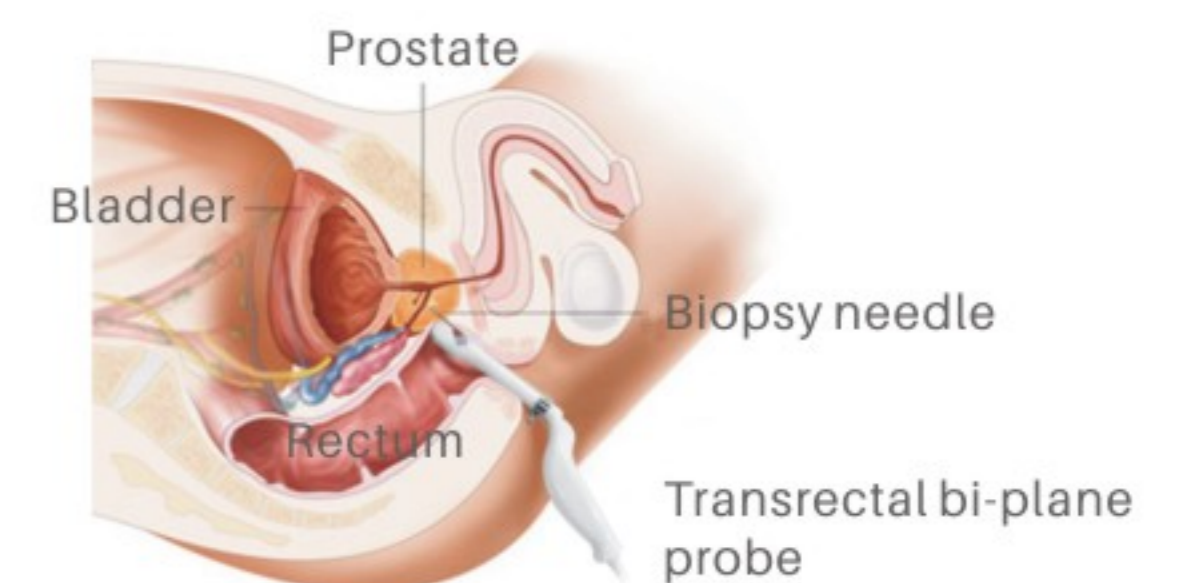
Advantages:

1. Large angle of the convex array enables a large imaging area which allows to display the complete structure of the prostate.
2. The dual real-time display supports the examination of two sections of the prostate at the same time which ensures a more precise needle biopsy.



The red plane represents the lateral array and the blue plane represents the vertical array.

The two planes are respectively used for lateral and vertical scanning. These two planes intersect with each other leads to the real-time image display of both planes on the screen.



It's difficult to accomplish the needle biopsy with the monoplane image of the prostate, because it's hard to ensure whether it's sampled with the expected target. The real-time dual planes images lead to a more precise target and facilitate the precise position and depth of the needle.